

Neenah R-4999-EX Bolted

Series

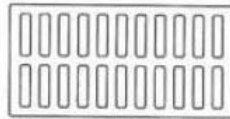
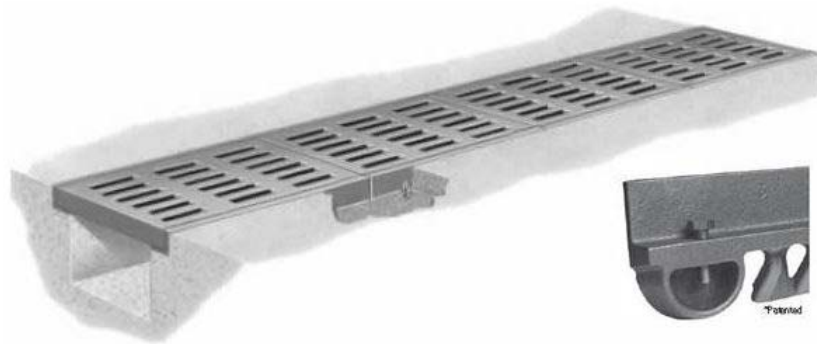
R-4999-EX

Cut Sheet

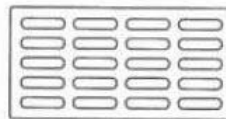
17" Wide Bolted Assy

17" Wide NEENAH Bolted Heavy Duty Trench Drain Grate and Frame Assy

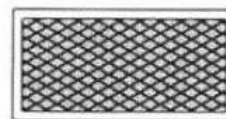
Product ID: R-4999-EX



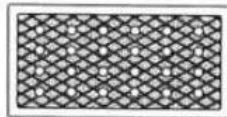
TYPE A
GRATE OPENINGS



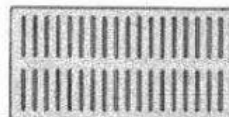
TYPE C
GRATE OPENINGS



TYPE D
SOLID LID



TYPE E
VENTED LID



TYPE P
GRATE OPENINGS

17" Wide Bolted Neenah R-4999-EX Series Trench Grate

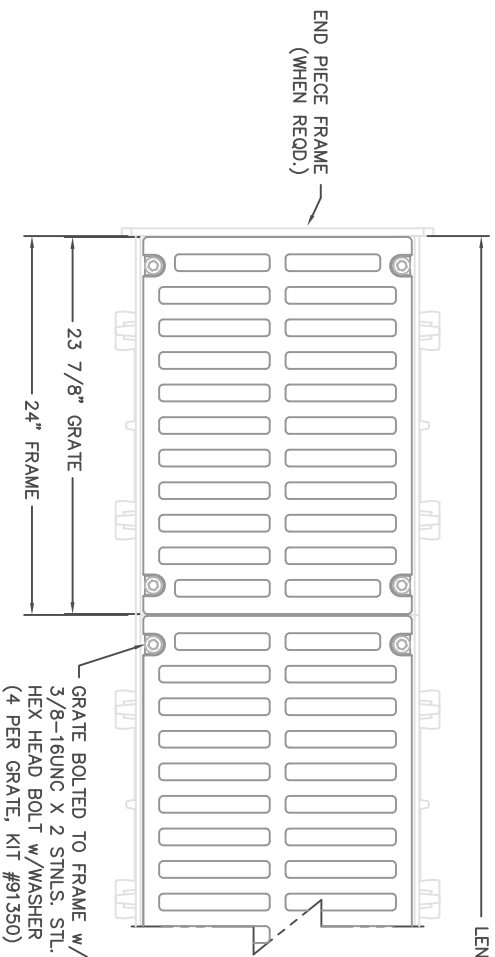
17"W X 24"L X 1 1/2"D

Choose Type A,C,D,E,P

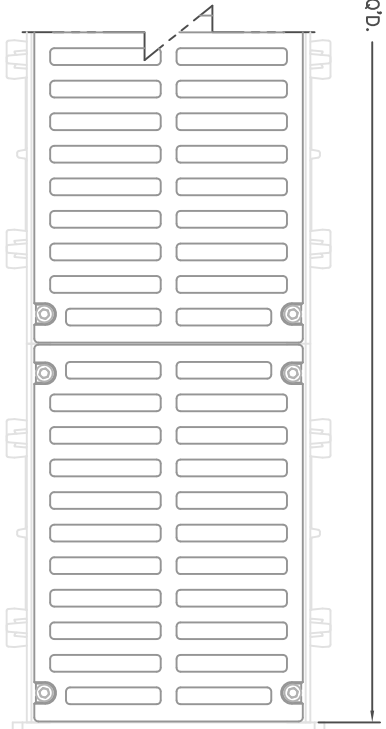
Illustrating Type C bolted trench. Bolted trench sections are furnished in 24" standard lengths. When bolted trench is furnished, they are shipped assembled – AT NO TIME should the units be disassembled during installation. When removing covers, do not mix or rotate 180 degrees as bolt holes may lose alignment and improper bearing may occur.

Note: In Type A and P grates the slots are perpendicular to the trench run. In Type C and Q grates the slots are parallel with the trench run.

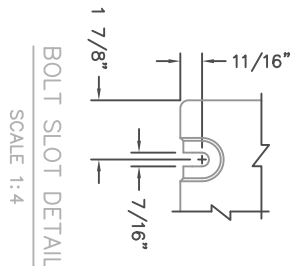




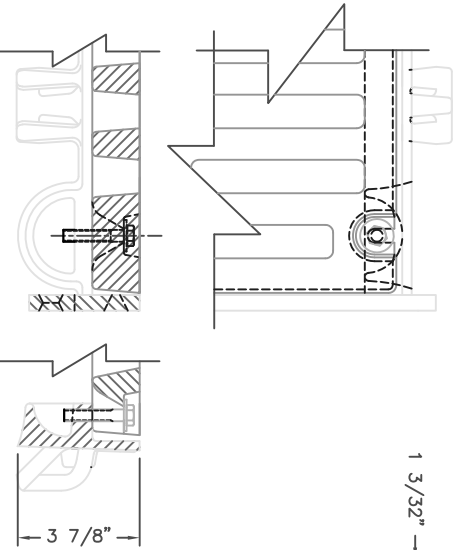
GRATE BOLTED TO FRAME W/
3/8-16UNC X 2 STL.S. STL.
HEX HEAD BOLT W/WASHER
(4 PER GRATE, KIT #91350)



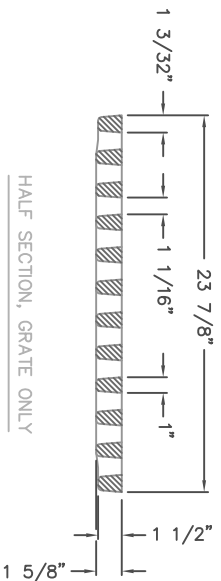
LENGTH REQ'D.



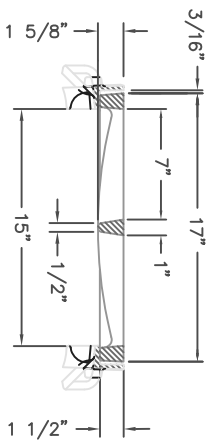
BOLT SLOT DETAIL
SCALE 1:4



FRAME & GRATE
SHOWING DEBRIS CHUTE
SCALE 1:4



HALF SECTION, GRATE ONLY



R-4999-EX
TYPE "A" GRATE
WITH TYPE "B" FRAME
TYPICAL SECTION

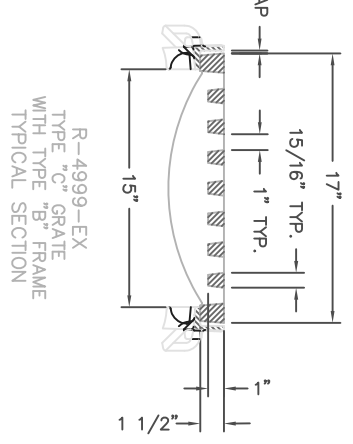
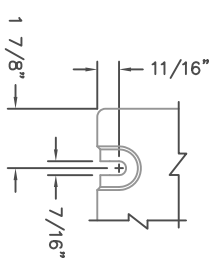
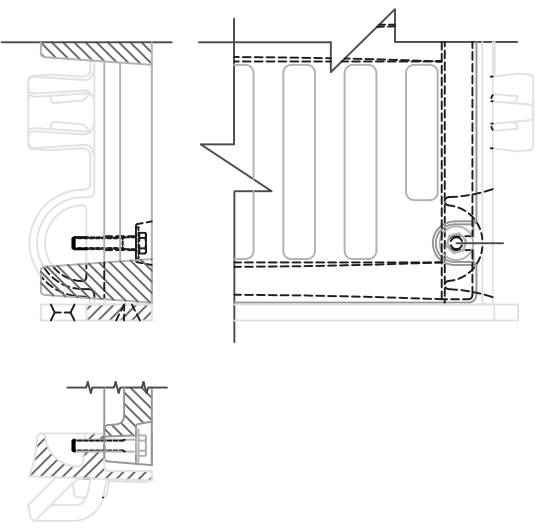
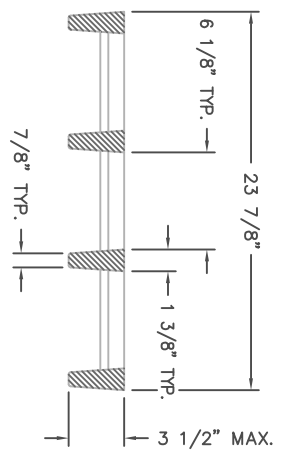
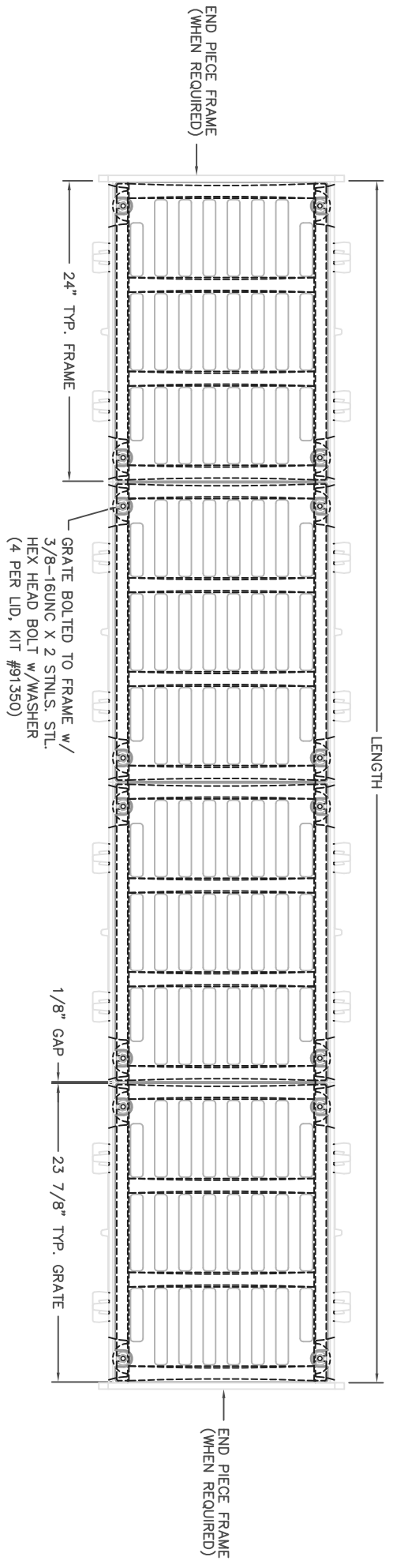
NOTES: FRAMES AND COVERS ARE FURNISHED IN STANDARD 2'-0" INCREMENTS. SPECIAL LENGTH FRAMES AND COVERS ARE FURNISHED FOR ANY OVERALL LENGTH.

COMPONENT NOS.: GRATE 4999-3171, FRAME SIDE P.C. 4999-2415, FRAME END P.C. 4990-3117

MATERIAL: SIDE P.C. FRAMES - CAST GRAY IRON ASTM A-48, CLASS 35A
END P.C. FRAMES AND GRATES - CAST GRAY IRON ASTM A-48, CLASS 35B

FINISH: NO PAINT

DR.	RKB	SCALE	1/8"=1"	TITLE	R-4999-EX
CH.					TYPE "A" GRATE W/ TYPE "B" FRAME
APP.		DIM. CHK.		NEENAH FOUNDRY COMPANY NEENAH WISCONSIN 54956	INF-4999EX A B
DATE	09-11-2009				



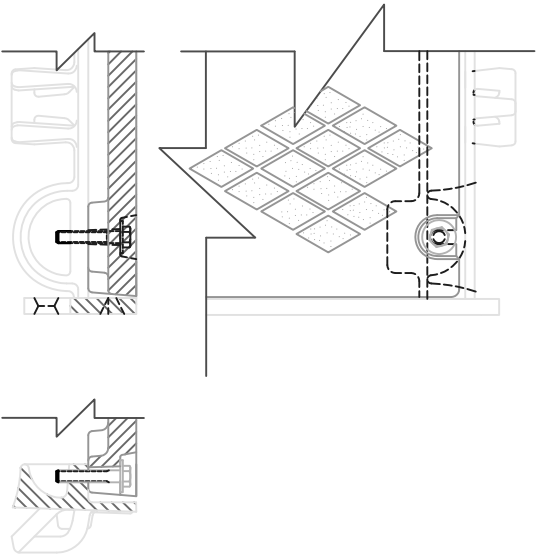
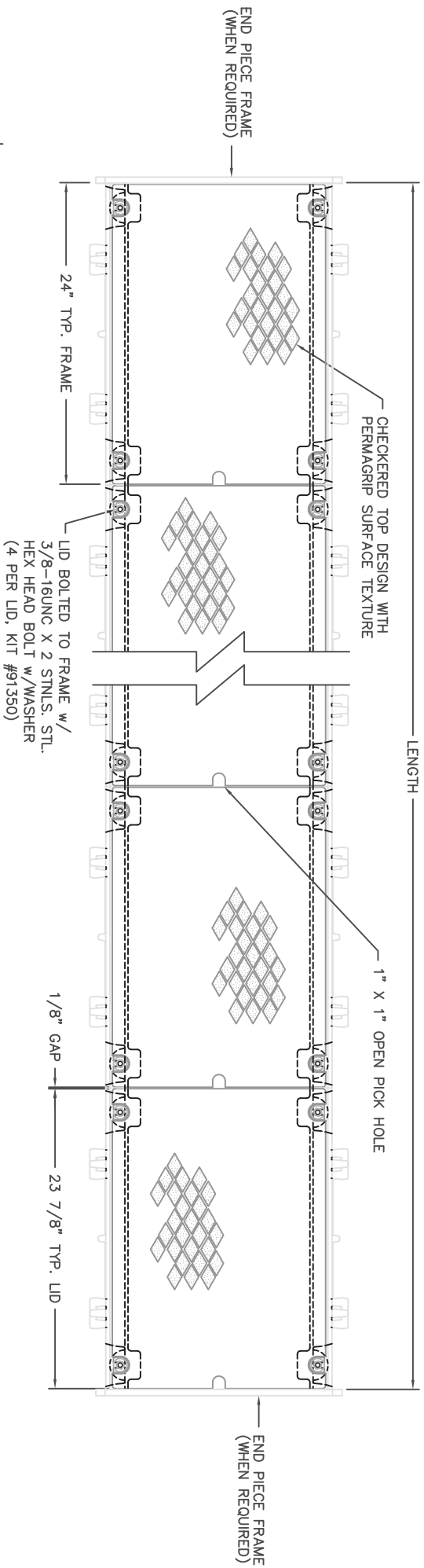
NOTES: FRAMES AND COVERS ARE FURNISHED IN STANDARD 2'-0" INCREMENTS. SPECIAL LENGTH FRAMES AND COVERS ARE FURNISHED FOR ANY OVERALL LENGTH.

COMPONENT NOS.: GRATE 4999-3173, FRAME SIDE PC. 4999-2415
FRAME END PC. 4990-3117

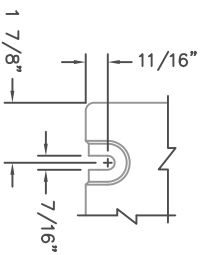
MATERIAL: FRAME SIDE P.C.S - CAST GRAY IRON ASTM A-48, CLASS 35A
FRAME END P.C.S AND GRATERS - CAST GRAY IRON ASTM A-48, CLASS 35B

FINISH: NO PAINT

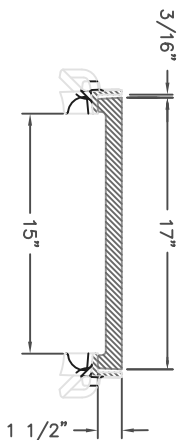
DR. K. HOGE	SCALE 1/8"=1"	TITLE: R-4999-EX
CH.	DWG. CHK.	TYPE "C" GRATE W/ TYPE "B" FRAME
APP.		NEENAH FOUNDRY COMPANY NEENAH WISCONSIN 54956
DATE 12-10-08		INF-4999EX CB



FRAME & COVER
SHOWING DEBRIS CHUTE
SCALE 1:4



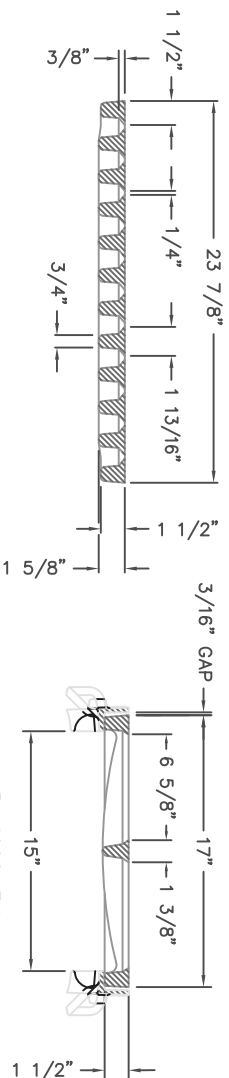
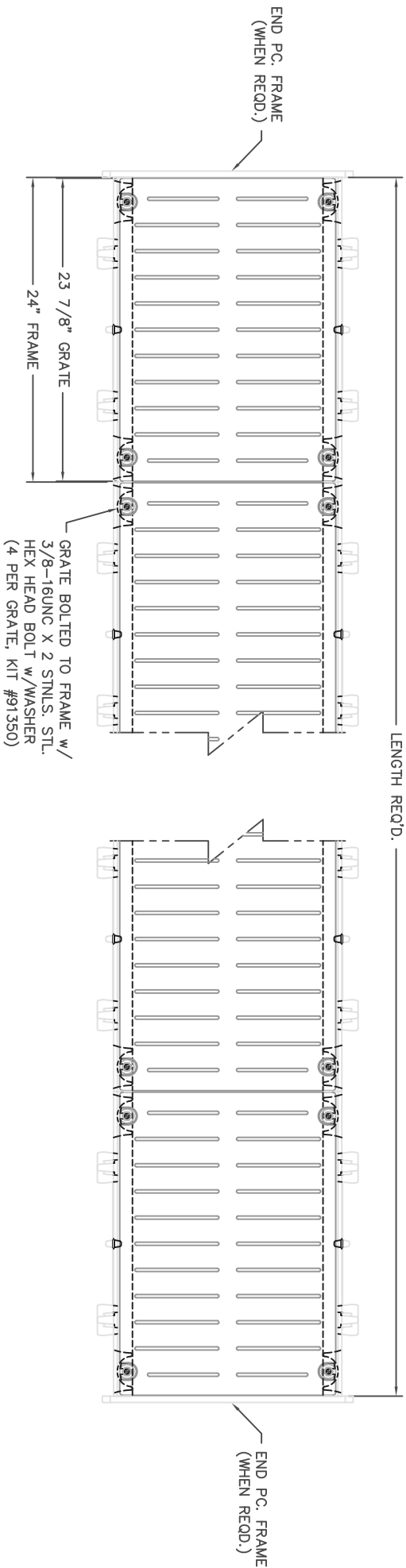
BOLT SLOT DETAIL
SCALE 1:4



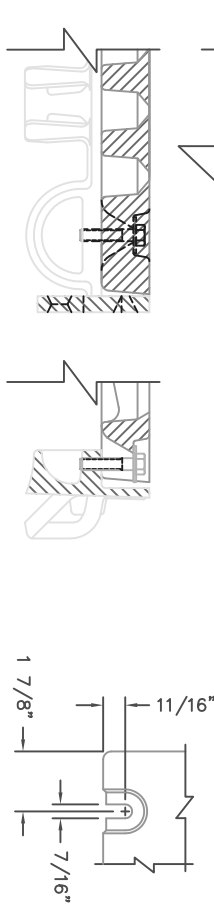
R-4999-EX
TYPE "D" LID
WITH TYPE "B" FRAME
TYPICAL SECTION

NOTES: FRAMES AND COVERS ARE FURNISHED IN STANDARD 2'-0" INCREMENTS. SPECIAL LENGTH FRAMES AND COVERS ARE FURNISHED FOR ANY OVERALL LENGTH.
COMPONENT NOS.: SIDE P.C. FRAME 4999-2415, END P.C. FRAME 4990-3117, LID 4999-3174
MATERIAL: SIDE P.C. FRAMES - CAST GRAY IRON ASTM A-48, CLASS 35A
END P.C. FRAMES AND LIDS - CAST GRAY IRON ASTM A-48, CLASS 35B
FINISH: NOT PAINTED

DR.	RKB	SCALE	TITLE:
CH.		1/8"=1"	TYPE "D" LID W/ TYPE "B" FRAME
APP.		DIM. CHK.	NEENAH FOUNDRY COMPANY NEENAH WISCONSIN 54956
DATE	09-22-2010		NF-4999EX DB



R-4999-EX
TYPE "P" GRATE
WITH TYPE "B" FRAME
TYPICAL SECTION



FRAME & GRATE
SHOWING DEBRIS CHUTE
BOLT SLOT DETAIL
SCALE 1:4

NOTES: FRAMES AND COVERS ARE FURNISHED IN STANDARD 2'-0" INCREMENTS. SPECIAL LENGTH FRAMES AND COVERS ARE FURNISHED FOR ANY OVERALL LENGTH.
COMPONENT NOS.: SIDE P.C. FRAME 4999-2415, END P.C. FRAME 4990-3117, GRATE 4999-3179
MATERIAL: SIDE P.C. FRAMES - CAST GRAY IRON ASTM A-48, CLASS 35A
END P.C. FRAMES AND GRATES - CAST GRAY IRON ASTM A-48, CLASS 35B
FINISH: NOT PAINTED

CAD DWG. REF: 4999EX P.DWG-1

DR.	K. HOGE	SCALE	TITLE
CHK.		1/8"=1"	TYPE "P" GRATE W/ TYPE "B" FRAME
APP.		DIM. CHK.	
DATE	12-11-08		

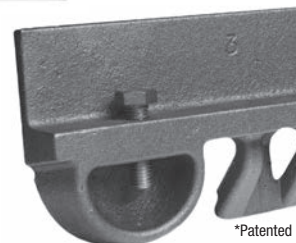
NEENAH
FOUNDRY COMPANY
NEENAH WISCONSIN 54956

INF-4999EX PB

HEAVY DUTY BOLTED TRENCH WITH DEBRIS CHUTE

Materials: All frames and grates/lids are furnished standard in gray iron, meeting ASTM A48 Class 35-B for heavy-duty use. For extra heavy-duty use or superior durability requirements, see our ductile iron Airport and Port Grating Series on pages 286.

Neenah recommends project designers avoid the use of light duty trench installations because it is likely that applications will be subjected to heavy delivery vehicle traffic at some time. Furthermore, the use of a site could be changed to heavy duty use patterns at some unanticipated future date.



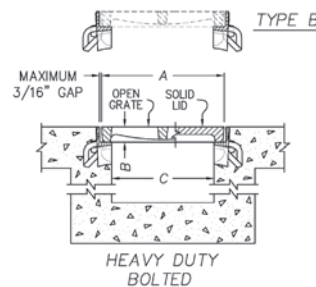
Dimensions in inches

Bolted Catalog No.	A	B	C	Type A	Type C	Type D	Type E	Type P	Type Q
R-4999-AX	8	1 1/2	6	x	x	x	x	x	
R-4999-BX	10	1 1/2	8	x	x	x	x	x	
R-4999-CX	12	1 1/2	10	x	x	x	x	x	x
R-4999-DX	14	1 1/2	12	x	x	x	x	x	x
R-4999-EX	17	1 1/2	15	x	x	x	x	x	
R-4999-FX	20	1 1/2	18	x	x	x	x	x	
R-4999-GX	23	1 1/2	21	x	x*	x			
R-4999-HX	26	1 1/2	24	x	x*	x	x		x
R-4999-JX	30	2	27	x	x	x			
R-4999-KX	33	2	30	x	x	x*	x		
R-4999-LX	36	2	33	x	x	x*			
R-4999-MX	39	2	36	x	x*	x			
R-4999-NX	45	2	42	x	x*	x			
R-4999-OX	51	2	48	x		x*			

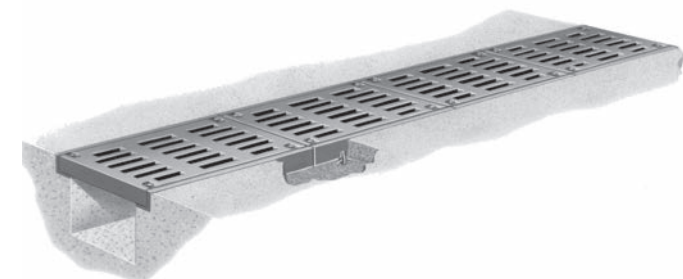
x - Indicates availability.

* Deep Ribs (consult shop drawing for dimensions).

Deep Ribs = "B" dimension times 2 or greater.



General schematic shown may not apply to all designs. Bar and rib depths, plate thicknesses, and seating widths vary on different sizes and styles. If your project has design restrictions, contact your sales representative or product engineering.



Illustrating Type C bolted trench. Bolted trench sections are furnished in 24" standard lengths. When bolted trench is furnished, they are shipped assembled – AT NO TIME should the units be disassembled during installation. When removing covers, do not mix or rotate 180 degrees as bolt holes may lose alignment and improper bearing may occur.

Note: In Type A and P grates the slots are perpendicular to the trench run. In Type C and Q grates the slots are parallel to the trench run.

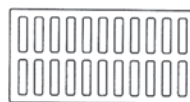
Read Carefully Before Ordering

The various standard trench drains are available with a number of alternatives. It is important to examine all of the variables carefully and specify your requirements fully. Your order will be entered correctly and promptly if it includes the following information:

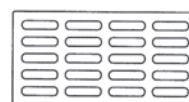
- Complete catalog number
- Frame end pieces, when required
- Type of Lid or Grate: A, C, D, E, P or Q
- Length of trench sections
- Angles and intersections *
- Load requirements

*Trenches with angles, intersections, size changes or other special requirements require detail drawings prior to ordering. Contact your sales representative or product engineering for assistance.

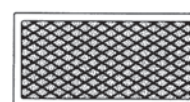
800-558-5075



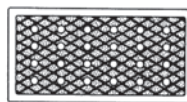
TYPE A
GRATE OPENINGS



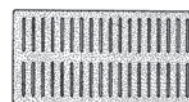
TYPE C
GRATE OPENINGS



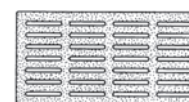
TYPE D
SOLID LID



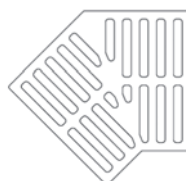
TYPE E
VENTED LID



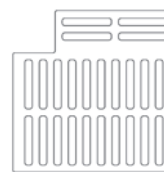
TYPE P
GRATE OPENINGS



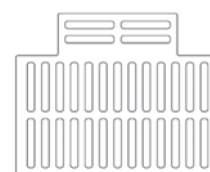
TYPE Q
GRATE OPENINGS



TYPE A
45 DEGREE
INTERSECTION PC.



TYPE A
90 DEGREE
INTERSECTION PC.



TYPE A
"T" INTERSECTION PC.

Note: 45°, 90° and "T" available in limited sizes and types.

Suggested Forming Instructions for R-4999 Frame and Grate/Lid

Bolted Units

Bolted frames and grates are furnished assembled and, therefore, require different forming procedures from unbolted units. Do check that the 3/16" maximum gap has not changed in transport. Details and suggestions are based on the Neenah Foundry Type B Frame.

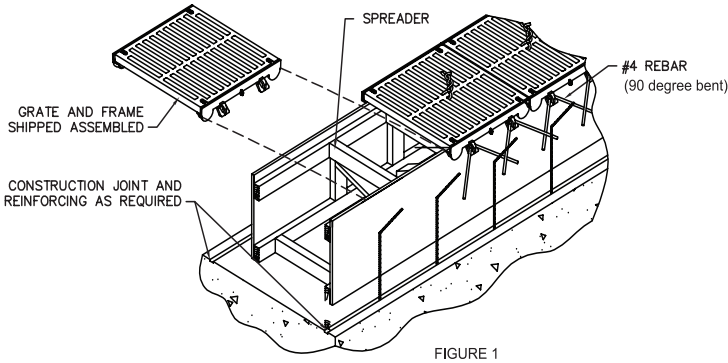
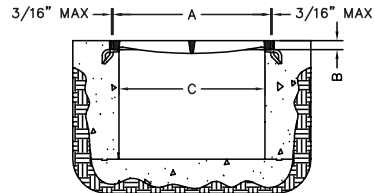


FIGURE 1

Forming Procedures

Pour the floor slab of the trench according to the plans and specifications. The width of the forming, (see Figure 1) measured from the outside edges of the forms, corresponds to the "C" dimension on Figure 2. During the entire forming procedure, verify that the forms are plumb, straight, solid and level.

The rebar shown in the vertical walls of the trench is for illustrative purposes only. Proper sizing and placement is the responsibility of the engineering firm providing the project design.



PARTIAL SECTION VIEW OF COMPLETED TRENCH INSTALLATION

FIGURE 2

When installing the frame and grate units on the forms (see figure 3). Keep the sections tight to one another to eliminate creep. When the sections are in the proper position, wire them to the bracing as show in Figure 4. Place a #4 rebar bent at 90° through the holes in the anchor lugs to provide proper anchorage in the concrete.

When concrete is cured, remove the grates, marking their position and orientation then strip the forms. Replace the grates/lids in the same location and with the same orientation as they came out. Bolts should be tightened to 15 foot-pounds. The completed installation should resemble figure 5.

General Comments

All frame sections are manufactured and furnished in standard 24" lengths. It is the responsibility of the installer to cut frame pieces to the proper length and miter corners where applicable. In cases where trench direction must change, special drawings will be furnished by our engineering services department. These prints will show special lengths and cuts of grates/lids and other essential information.

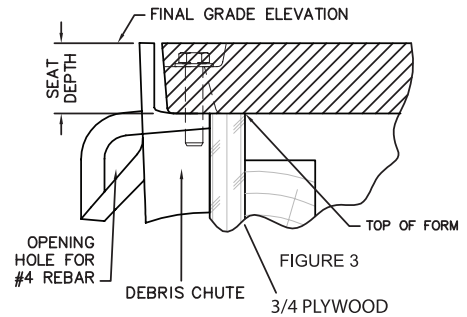


FIGURE 3

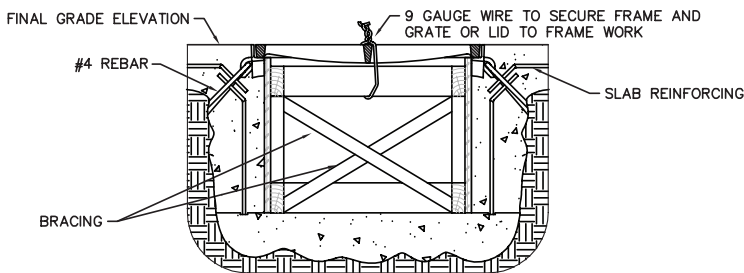


FIGURE 4

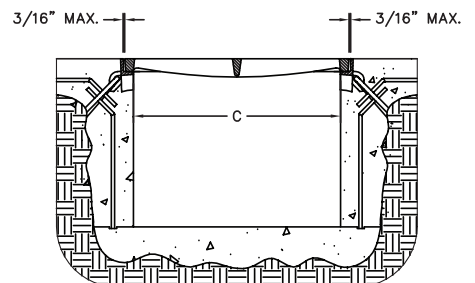


FIGURE 5

