

**Neenah R-4999-CX Bolted**

Series

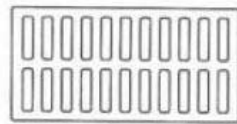
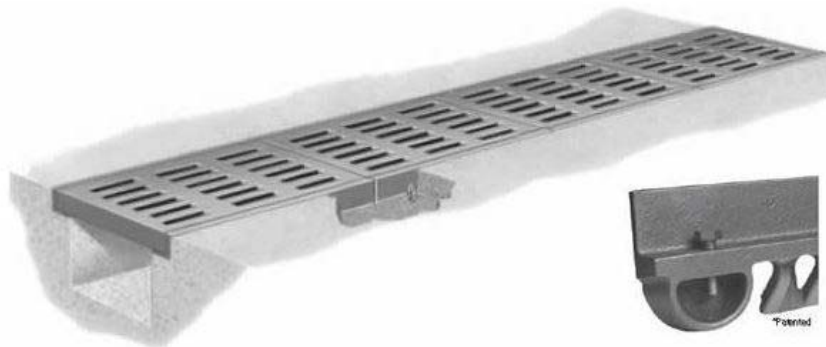
**R-4999-CX**

Cut Sheet

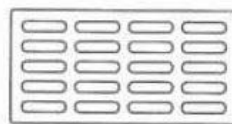
12" Wide Bolted Assy

**12" Wide NEENAH Bolted Heavy Duty Trench Drain Grate and Frame Assy**

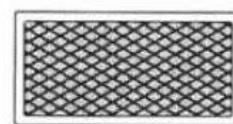
Product ID: R-4999-CX



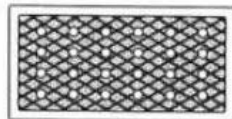
*TYPE A*  
GRATE OPENINGS



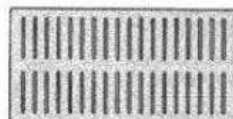
*TYPE C*  
GRATE OPENINGS



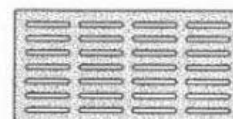
*TYPE D*  
SOLID LID



*TYPE E*  
VENTED LID



*TYPE P*  
GRATE OPENINGS



*TYPE Q*  
GRATE OPENINGS

**12" Wide Bolted Neenah R-4999-CX Series Trench Grate**

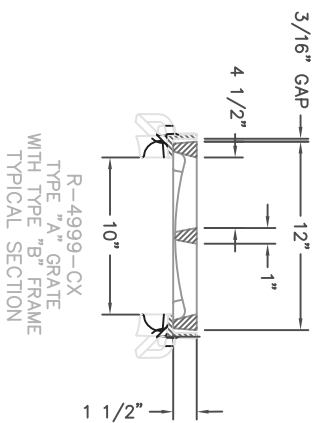
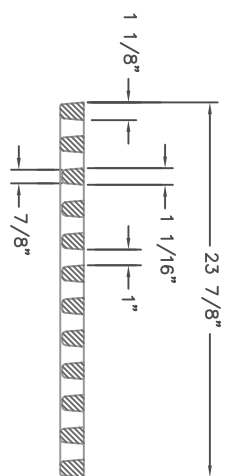
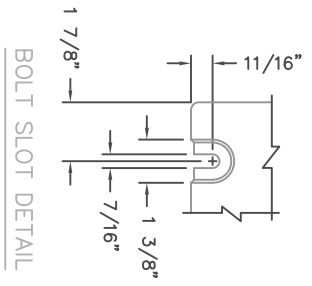
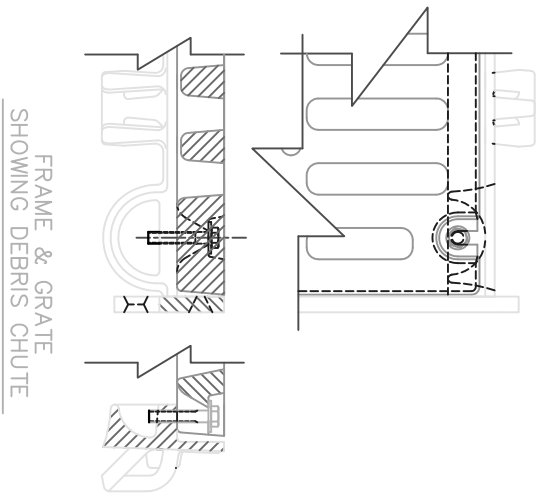
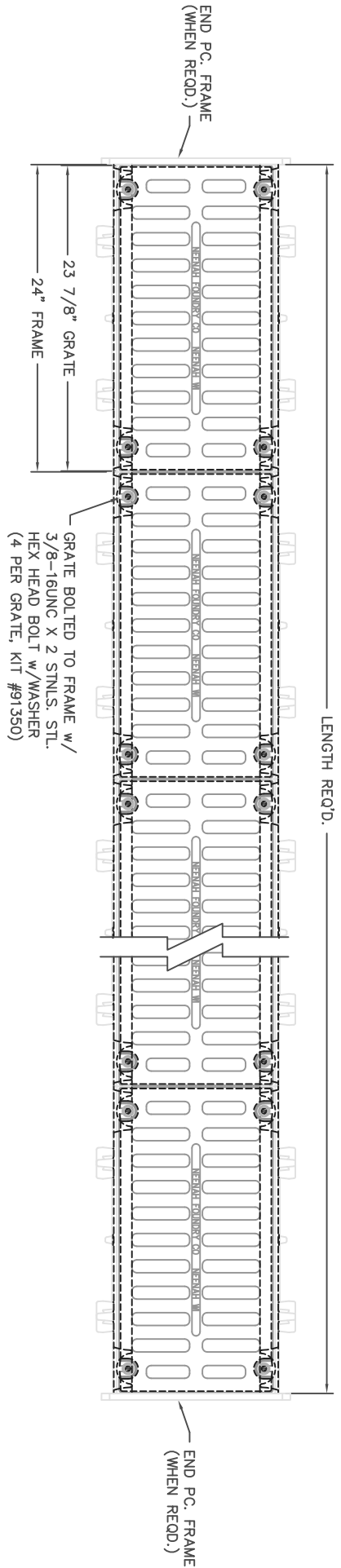
12"W X 24"L X 1 1/2"D

Choose Type A,C,D,E,P,K

**Illustrating Type C bolted trench. Bolted trench sections are furnished in 24" standard lengths. When bolted trench is furnished, they are shipped assembled – AT NO TIME should the units be disassembled during installation. When removing covers, do not mix or rotate 180 degrees as bolt holes may lose alignment and improper bearing may occur.**

**Note: In Type A and P grates the slots are perpendicular to the trench run. In Type C and Q grates the slots are parallel with the trench run.**





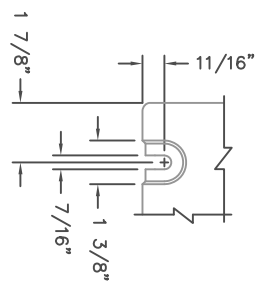
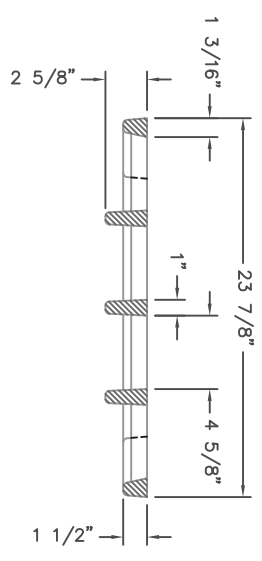
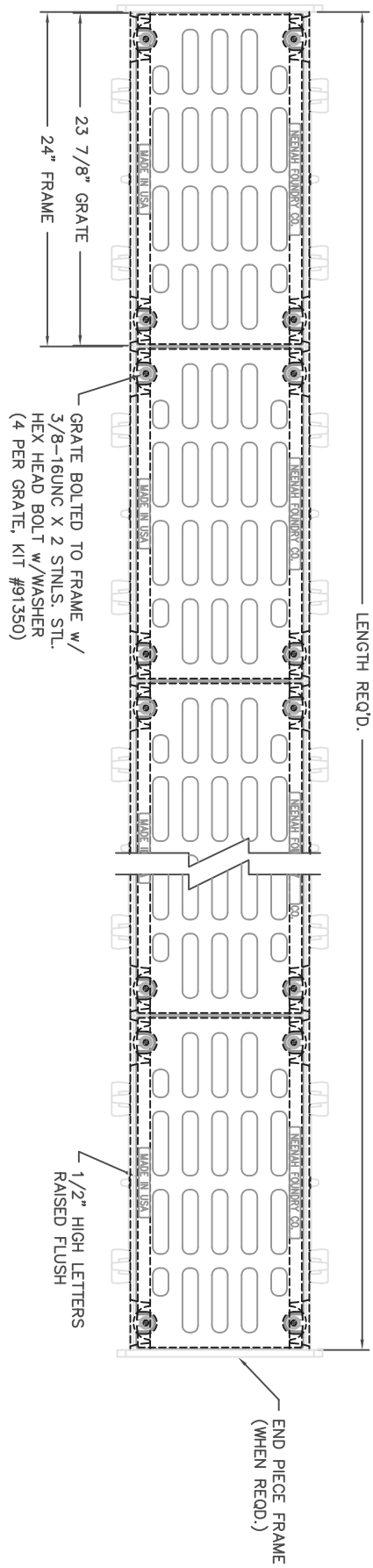
NOTES: FRAMES AND COVERS ARE FURNISHED IN STANDARD 2'-0" INCREMENTS. SPECIAL LENGTH FRAMES AND COVERS ARE FURNISHED FOR ANY OVERALL LENGTH.

COMPONENT NOS.: GRATE 4999-3121, SIDE PC. FRAME 4999-2415, END PC. FRAME 4990-3112 (IF REQUIRED)

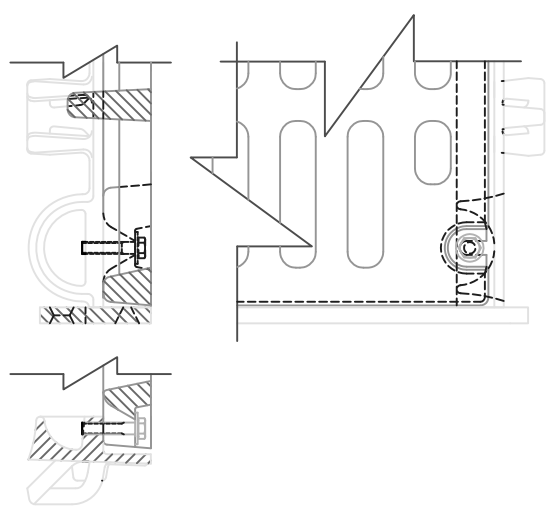
MATERIAL: SIDE PC. FRAMES - CAST GRAY IRON ASTM A-48, CLASS 35A  
END PC. FRAMES AND GRATES - CAST GRAY IRON ASTM A-48, CLASS 35B

FINISH: NO PAINT

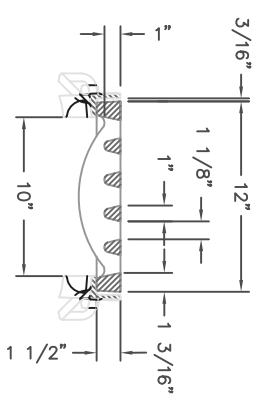
DR.	K. HOGE	SCALE	TITLE
CH.		1/8"=1"	R-4999-CX TYPE "A" GRATE w/ TYPE "B" FRAME
APP.	DM GHK		NEENAH FOUNDRY COMPANY MERRILL WISCONSIN 54989
DATE	12-11-08		NF-4999CX AB



BOLT SLOT DETAIL  
SCALE 1:4



SCALE 1:4



R-4999-CX  
TYPE "C" GRATE  
WITH TYPE "B" FRAME  
TYPICAL SECTION

NOTES: FRAMES AND COVERS ARE FURNISHED IN STANDARD 2'-0" INCREMENTS. SPECIAL LENGTH FRAMES AND COVERS ARE FURNISHED FOR ANY OVERALL LENGTH.

COMPONENT NOS.: GRATE 4999-3123, SIDE PC. FRAME 4999-2415, FRAME END PC. 4990-3112 (IF REQUIRED)

MATERIAL: SIDE PC. FRAME - CAST GRAY IRON ASTM A-48, CLASS 35A  
END PC. FRAME AND GRATES - CAST GRAY IRON ASTM A-48, CLASS 35B

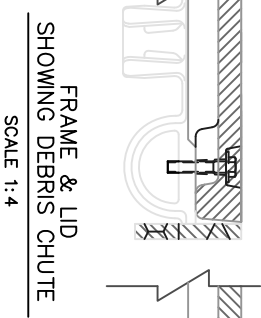
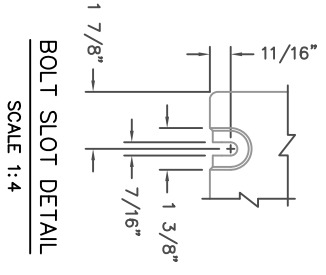
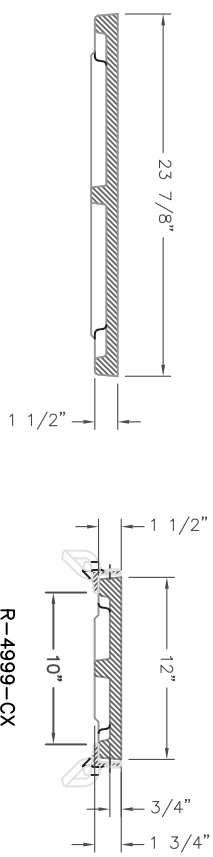
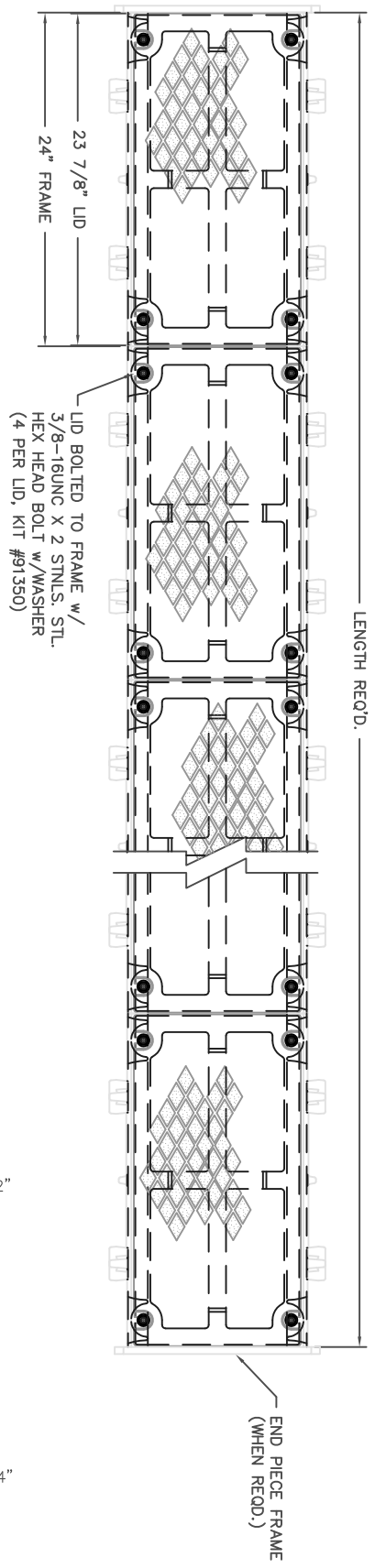
FINISH: NO PAINT

DR.	E. NIVER	SCALE	TITLE
CH.		1/8"=1"	TYPE "C" GRATE W/ TYPE "B" FRAME
APP.		DIM CHK.	
DATE	04-03-2013		

R-4999-CX  
TYPE "C" GRATE W/ TYPE "B" FRAME

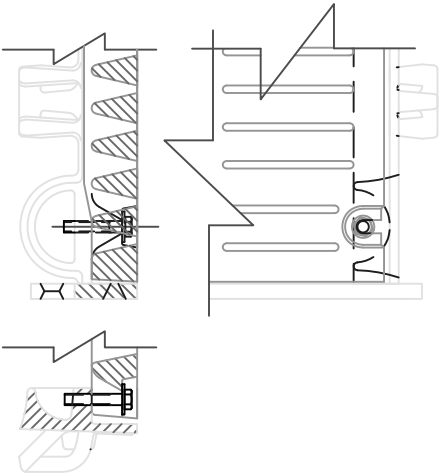
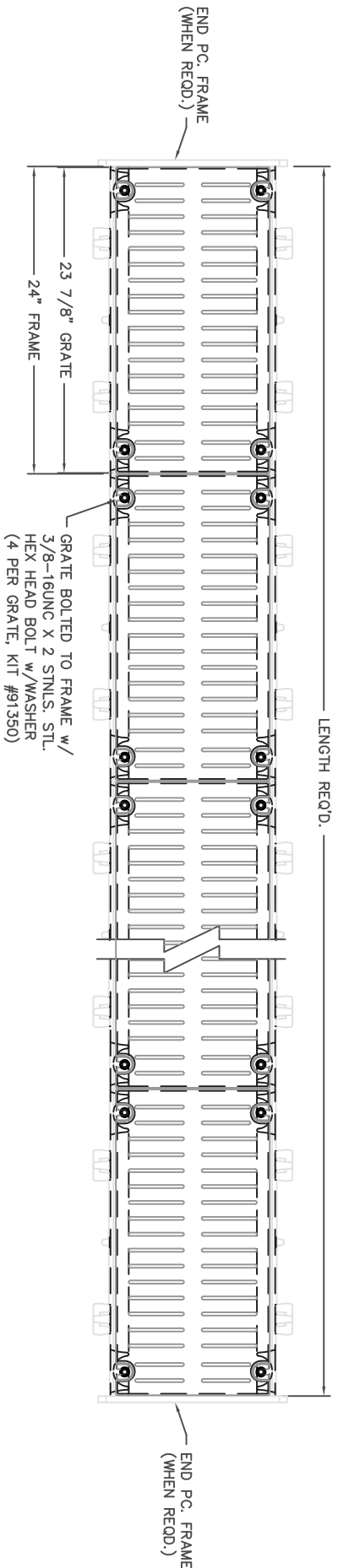
NEENAH FOUNDRY COMPANY  
NEENAH WISCONSIN 54956

NF-4999CX CB



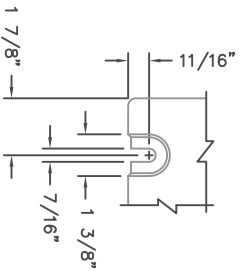
NOTES: FRAMES AND COVERS ARE FURNISHED IN STANDARD 2'-0" INCREMENTS. SPECIAL LENGTH FRAMES AND COVERS ARE FURNISHED FOR ANY OVERALL LENGTH.  
COMPONENT NOS.: LID 4999-3124, SIDE PC. FRAME 4999-2415,  
END PC. FRAME 4990-3112 (WHEN REQ'D)  
MATERIAL: SIDE PC. FRAMES - CAST GRAY IRON ASTM A-48, CLASS 35A  
END PC. FRAMES AND LIDS - CAST GRAY IRON ASTM A-48, CLASS 35B  
FINISH: NO PAINT UNLESS SPECIFIED ON PURCHASE ORDER

DR.	CAG	SCALE	TITLE:
CH.		1/8"=1'	R-4999-CX BOLTED TYPE "D" LID w/ TYPE "B" FRAME
APP.		DM GHK	
DATE	08-03-2012		
www.neenfoundry.com			
NEENAH FOUNDRY			
NEENAH WISCONSIN 54996			
PHONE: 1-800-558-5075			
NF-4999CX			
D B			



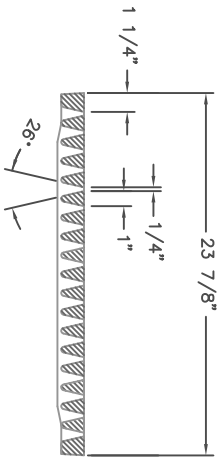
FRAME & GRATE  
SHOWING DEBRIS CHUTE

SCALE 1:4

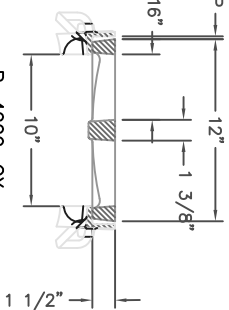


BOLT SLOT DETAIL

SCALE 1:4



R-4999-CX  
TYPE "P" GRATE  
WITH TYPE "B" FRAME  
TYPICAL SECTION



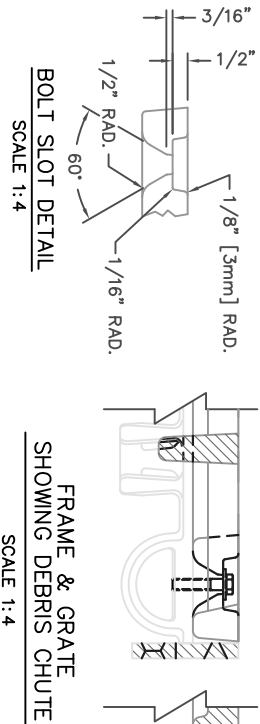
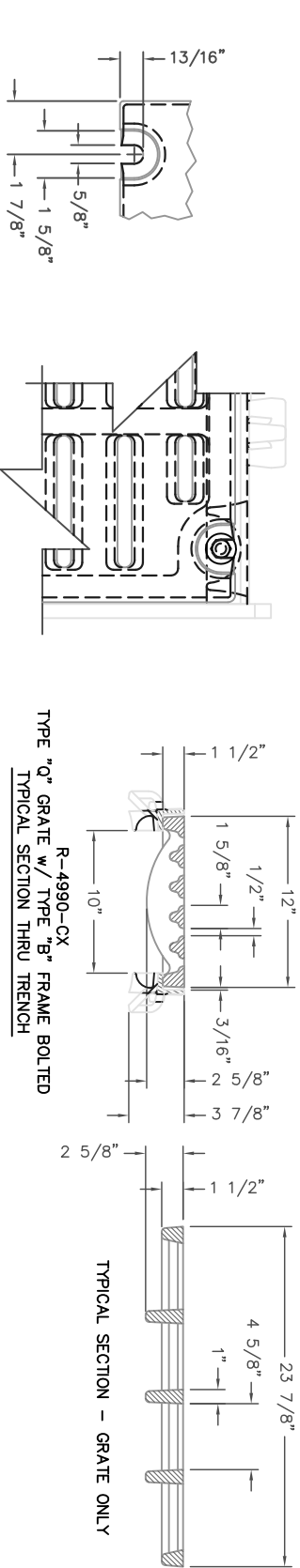
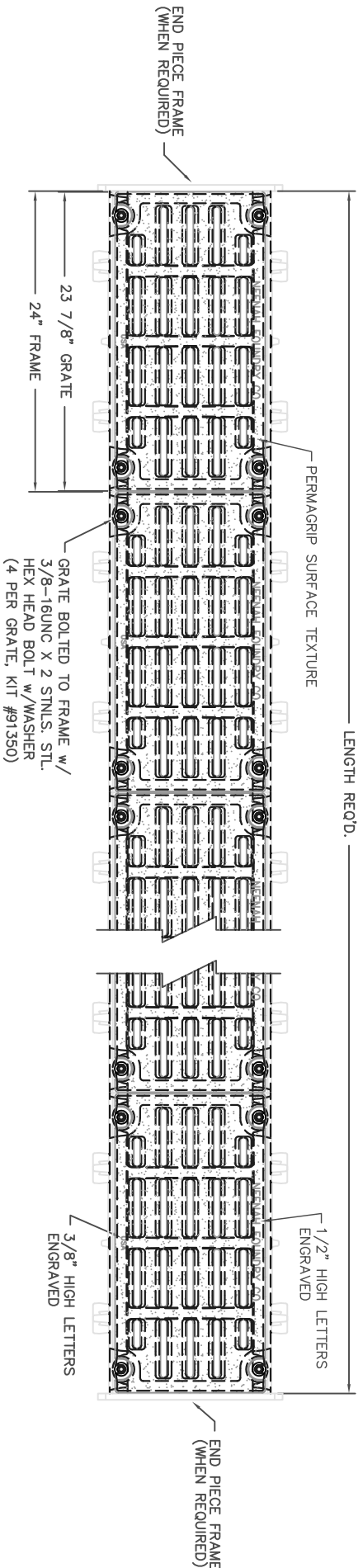
NOTES: FRAMES AND COVERS ARE FURNISHED IN STANDARD 2'-0" INCREMENTS. SPECIAL LENGTH FRAMES AND COVERS ARE FURNISHED FOR ANY OVERALL LENGTH.

COMPONENT NOS.: GRATE 4999-3129, SIDE P.C. FRAME 4999-2415, END P.C. FRAME 4990-3112

MATERIAL: SIDE P.C. FRAMES - CAST GRAY IRON ASTM A-48, CLASS 35A  
END P.C. FRAMES AND GRATINGS - CAST GRAY IRON ASTM A-48, CLASS 35B

FINISH: NO PAINT

DR.	RKB	SCALE	TITLE
CH.	CAG	1/8"=1'	TYPE 'P' GRATE w/ TYPE 'B' FRAME
APP.	SPT	<p>NEENAH WISCONSIN 54956 PHONE: 800-556-8073 LINCOLN, NEBRASKA 68529 PHONE: 800-234-7488</p>	
DATE	17-30-2014		
www.nfco.com		R-4999-CX	
		NF-4999CX P B	



NOTES: FRAMES AND COVERS ARE FURNISHED IN STANDARD 2'-0" INCREMENTS. SPECIAL LENGTH FRAMES AND COVERS ARE FURNISHED FOR ANY OVERALL LENGTH.

COMPONENT NOS.: SIDE PC. FRAME 4999-2415; END PC. FRAME 4990-3112 GRATE 4990-3127

MATERIAL: SIDE PC. FRAMES - CAST GRAY IRON ASTM A-48, CLASS 35A  
END PC. FRAMES AND GRATES - CAST GRAY IRON ASTM A-48, CLASS 35B

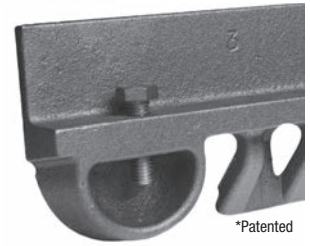
FINISH: NO PAINT

DR.	E. NIVER	SCALE	TITLE
CH.		1/8" = 1"	R-4999-CX TYPE "Q" GRATE AND TYPE "B" FRAME, BOLTED
APP.		DM CHK.	NEENAH FOUNDRY COMPANY NEWARK, MISSOURI 64656
DATE	06-06-2013		NF-49999CX QB

# HEAVY DUTY BOLTED TRENCH WITH DEBRIS CHUTE

Materials: All frames and grates/lids are furnished standard in gray iron, meeting ASTM A48 Class 35-B for heavy-duty use. For extra heavy-duty use or superior durability requirements, see our ductile iron Airport and Port Grating Series on pages 286.

Neenah recommends project designers avoid the use of light duty trench installations because it is likely that applications will be subjected to heavy delivery vehicle traffic at some time. Furthermore, the use of a site could be changed to heavy duty use patterns at some unanticipated future date.

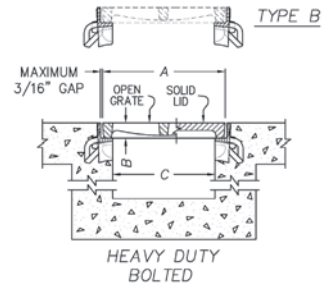


Dimensions in inches

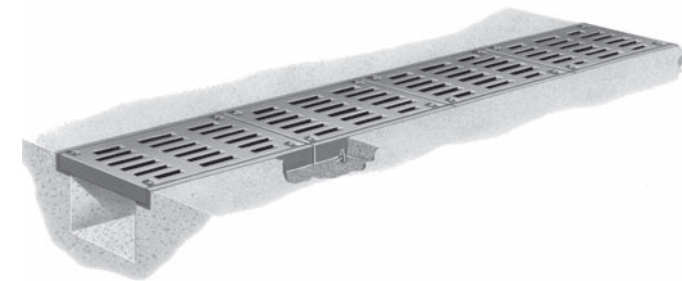
Bolted Catalog No.	A	B	C	Type A	Type C	Type D	Type E	Type P	Type Q
R-4999-AX	8	1 1/2	6	x	x	x	x	x	
R-4999-BX	10	1 1/2	8	x	x	x	x	x	
R-4999-CX	12	1 1/2	10	x	x	x	x	x	x
R-4999-DX	14	1 1/2	12	x	x	x	x	x	x
R-4999-EX	17	1 1/2	15	x	x	x	x	x	
R-4999-FX	20	1 1/2	18	x	x	x	x	x	
R-4999-GX	23	1 1/2	21	x	x*	x			
R-4999-HX	26	1 1/2	24	x	x*	x	x		x
R-4999-JX	30	2	27	x	x	x			
R-4999-KX	33	2	30	x	x	x*	x		
R-4999-LX	36	2	33	x	x	x*			
R-4999-MX	39	2	36	x	x*	x			
R-4999-NX	45	2	42	x	x*	x			
R-4999-OX	51	2	48	x		x*			

x - Indicates availability.

\* Deep Ribs (consult shop drawing for dimensions).  
Deep Ribs = "B" dimension times 2 or greater.



General schematic shown may not apply to all designs. Bar and rib depths, plate thicknesses, and seating widths vary on different sizes and styles. If your project has design restrictions, contact your sales representative or product engineering.



Illustrating Type C bolted trench. Bolted trench sections are furnished in 24" standard lengths. When bolted trench is furnished, they are shipped assembled – AT NO TIME should the units be disassembled during installation. When removing covers, do not mix or rotate 180 degrees as bolt holes may lose alignment and improper bearing may occur.

Note: In Type A and P grates the slots are perpendicular to the trench run. In Type C and Q grates the slots are parallel to the trench run.

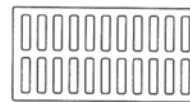
## Read Carefully Before Ordering

The various standard trench drains are available with a number of alternatives. It is important to examine all of the variables carefully and specify your requirements fully. Your order will be entered correctly and promptly if it includes the following information:

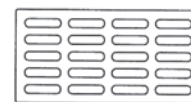
- Complete catalog number
- Frame end pieces, when required
- Type of Lid or Grate: A, C, D, E, P or Q
- Length of trench sections
- Angles and intersections \*
- Load requirements

\*Trenches with angles, intersections, size changes or other special requirements require detail drawings prior to ordering. Contact your sales representative or product engineering for assistance.

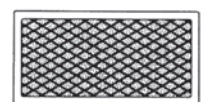
800-558-5075



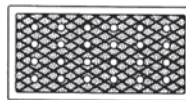
TYPE A  
GRATE OPENINGS



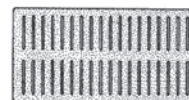
TYPE C  
GRATE OPENINGS



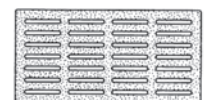
TYPE D  
SOLID LID



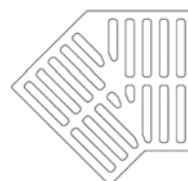
TYPE E  
VENTED LID



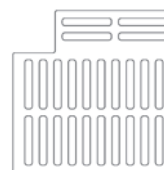
TYPE P  
GRATE OPENINGS



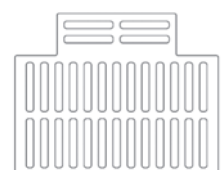
TYPE Q  
GRATE OPENINGS



TYPE A  
45 DEGREE  
INTERSECTION PC.



TYPE A  
90 DEGREE  
INTERSECTION PC.



TYPE A  
"T" INTERSECTION PC.

Note: 45°, 90° and "T" available in limited sizes and types.

**Suggested Forming Instructions for R-4999 Frame and Grate/Lid**

**Bolted Units**

Bolted frames and grates are furnished assembled and, therefore, require different forming procedures from unbolted units. Do check that the 3/16" maximum gap has not changed in transport. Details and suggestions are based on the Neenah Foundry Type B Frame.

**Forming Procedures**

Pour the floor slab of the trench according to the plans and specifications. The width of the forming, (see Figure 1) measured from the outside edges of the forms, corresponds to the "C" dimension on Figure 2. During the entire forming procedure, verify that the forms are plumb, straight, solid and level.

The rebar shown in the vertical walls of the trench is for illustrative purposes only. Proper sizing and placement is the responsibility of the engineering firm providing the project design.

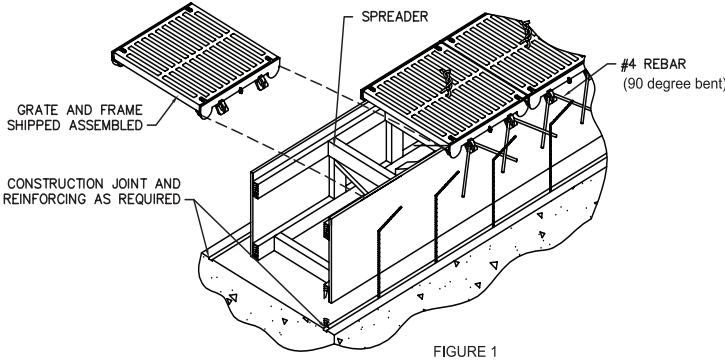
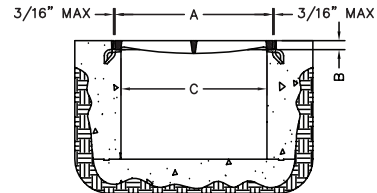


FIGURE 1



PARTIAL SECTION VIEW OF COMPLETED TRENCH INSTALLATION

FIGURE 2

When installing the frame and grate units on the forms (see figure 3). Keep the sections tight to one another to eliminate creep. When the sections are in the proper position, wire them to the bracing as show in Figure 4. Place a #4 rebar bent at 90° through the holes in the anchor lugs to provide proper anchorage in the concrete.

When concrete is cured, remove the grates, marking their position and orientation then strip the forms. Replace the grates/lids in the same location and with the same orientation as they came out. Bolts should be tightened to 15 foot-pounds. The completed installation should resemble figure 5.

**General Comments**

All frame sections are manufactured and furnished in standard 24" lengths. It is the responsibility of the installer to cut frame pieces to the proper length and miter corners where applicable. In cases where trench direction must change, special drawings will be furnished by our engineering services department. These prints will show special lengths and cuts of grates/lids and other essential information.

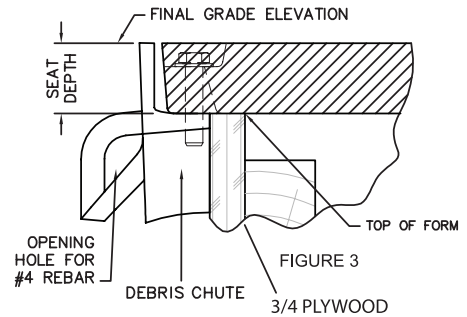


FIGURE 3

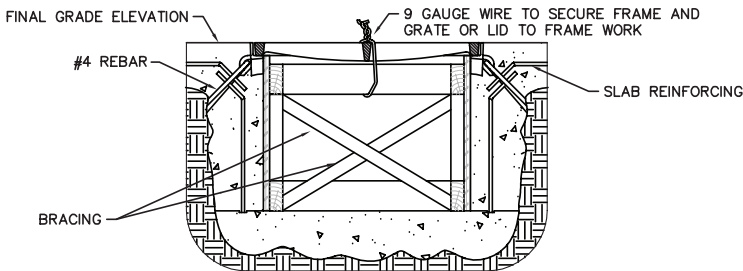


FIGURE 4

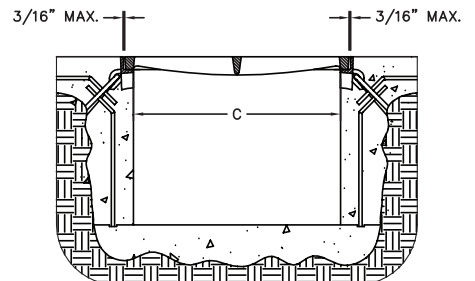


FIGURE 5



+1 646-227-0910

www.swift drain.com