

# MEARIN® Drainage Systems



Material: Fiberglass

Locking System: STANDARD lock bar system

Accessories: Silt box

Corner unit

Trap

Installation bracket

## MEARIN 100

 **WARNING:** Cancer and Reproductive Harm - [www.p65warnings.ca.gov](http://www.p65warnings.ca.gov)

# MEARIN® drainage systems



## MEARIN 100

Clear Width: 4" interior  
 Total Width: 5.35"  
 Fall Options: Available without fall  
 Locking System: STANDARD  
 Load Class: A, B, C



Channel unit MEARIN 100

product description	dimension l x h [in]	product #	lbs/ unit
Mearin 100	39.4 x 4.9	141105	5.0
Mearin 50	19.7 x 4.9	141055	2.8

## MEARIN 100 Grate Options

Channel grating covers for MEARIN 100

product description	dimension [inches]	product #	lbs/ unit	
grey plastic slotted grating*	19.7 x 4.8	141709	1.8	
beige plastic slotted grating*	19.7 x 4.8	141712	1.8	
galvanized mesh grating mw 1.25/0.375	39.8 x 4.8	152301	4.8	
galvanized mesh grating mw 1.25/0.375	19.7 x 4.8	152306	2.6	
galvanized slotted grating (no TopFix)	39.8 x 4.8	152101	5.1	
galvanized slotted grating (no TopFix)	19.7 x 4.8	152106	2.9	
stainless steel slotted grating	39.8 x 4.8	152201	4.6	
stainless steel slotted grating	19.7 x 4.8	152206	2.3	
galvanized reinforced mesh grating mw 1.25/0.375	39.8 x 4.8	152503	6.8	
galvanized reinforced mesh grating mw 1.25/0.375	19.7 x 4.8	152508	3.4	
galvanized reinforced slotted grating	39.8 x 4.8	152711	11.4	
galvanized reinforced slotted grating	19.7 x 4.8	152731	5.8	
ductile iron slotted grating*	19.7 x 4.8	152411	7.7	

Note

\* Use 2 grating covers/per 40 inches.  
<sup>1)</sup> For loading class index, see page vii.

For additional grate options, please see page 50.

### Applications

#### Parking lots, public areas

- Choose from 20 different grate options
- Select them according to weight load or appearance requirements

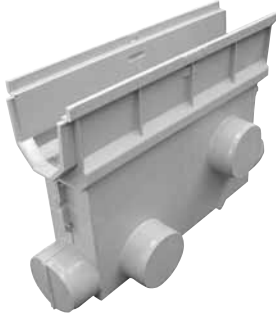
#### Swimming pools, recreational areas

- PVC slotted or stainless steel perforated grates offer aesthetically pleasing surface
- Factory fabricated corner sections using full length grate eliminates field modifications

# MEADRAIN® Select

## MEARIN 100 Accessories

### Silt Box



Material: Fiberglass  
Includes: Sediment bucket, odor seal and 2 end caps

product description	dimension l x h [in]	product #	lbs/unit
silt box	19.7 x 15.5	142000	14.5

## Grate Covers

### Grating Covers for Silt Box

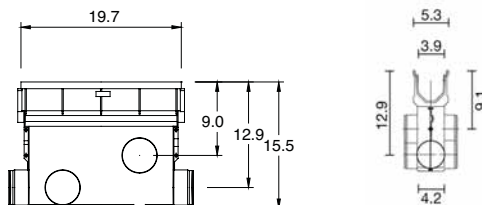


product description	dimension [inches]	product #	lbs/unit	
grey plastic slotted grating*	19.7 x 4.8	141709	1.8	
beige plastic slotted grating*	19.7 x 4.8	141712	1.8	
galvanized mesh grating 1.25/0.375	19.7 x 4.8	152306	2.6	
stainless steel slotted grating	19.7 x 4.8	152206	2.3	
galvanized reinforced mesh grating mw 1.25/0.375	19.7 x 4.8	152208	3.3	
galvanized reinforced slotted grating	19.7 x 4.8	152731	8.0	
ductile iron slotted grating	19.7 x 4.8	152411	7.7	

**WARNING: Cancer and Reproductive Harm** - [www.p65warnings.ca.gov](http://www.p65warnings.ca.gov)

#### Note

For additional grate options, please see page 50.



All units in inches unless otherwise noted.

# MEADRAIN® Select

## MEARIN 100 Accessories

### Corner Unit



Bend: 90 degree

product description	dimension l x w [in]	product #	lbs/unit
corner unit	20.0 x 24.8	143050	6.6

### Trap Set



Outlet Connector: 4 inches Ø  
Includes: Odor seal, 2 end caps and bolts

product description	product #	lbs/unit
PVC connector Ø 4"	141400	0.7

### End Cap



Material: Polyethylene

product description	cross-section Ø [in]	product #	lbs/unit
end cap	2.8	141350	0.1

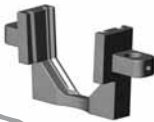
Locking mechanism for MEARIN 100

product description	product #	lbs/unit
with stainless steel bolts mesh, perf, plastic	141465	0.4
with stainless steel bolts for slotted and ductile iron gratings*	141460	0.2

\* 1 bolt/per 19.7 inches

## New Bracket for installation

### Bracket



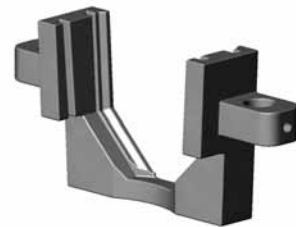
Material:

product description	product #	lbs/unit
channel support bracket	141100	1

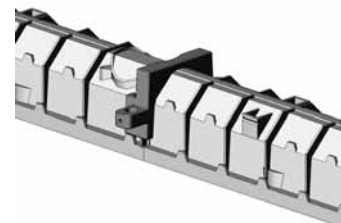


1. Arrange channels in a straight line, open side down.
2. Position each section allowing tongue and groove ends to overlap
3. Using the exterior ribs of the channel as a guide, insert bracket over channel overlap.
4. Push bracket down until it seats against bottom of channel. (If the bottom outlet knockout isn't completely visible, remove bracket and rotate 180 degrees.
5. Repeat this process for all channel joints.
6. Insert additional bracket near each end of the completed TD
7. Position the assembled trench drain open side up.
8. Insert rebar stakes thru holes on each side of bracket, bring to level and tighten set screws.

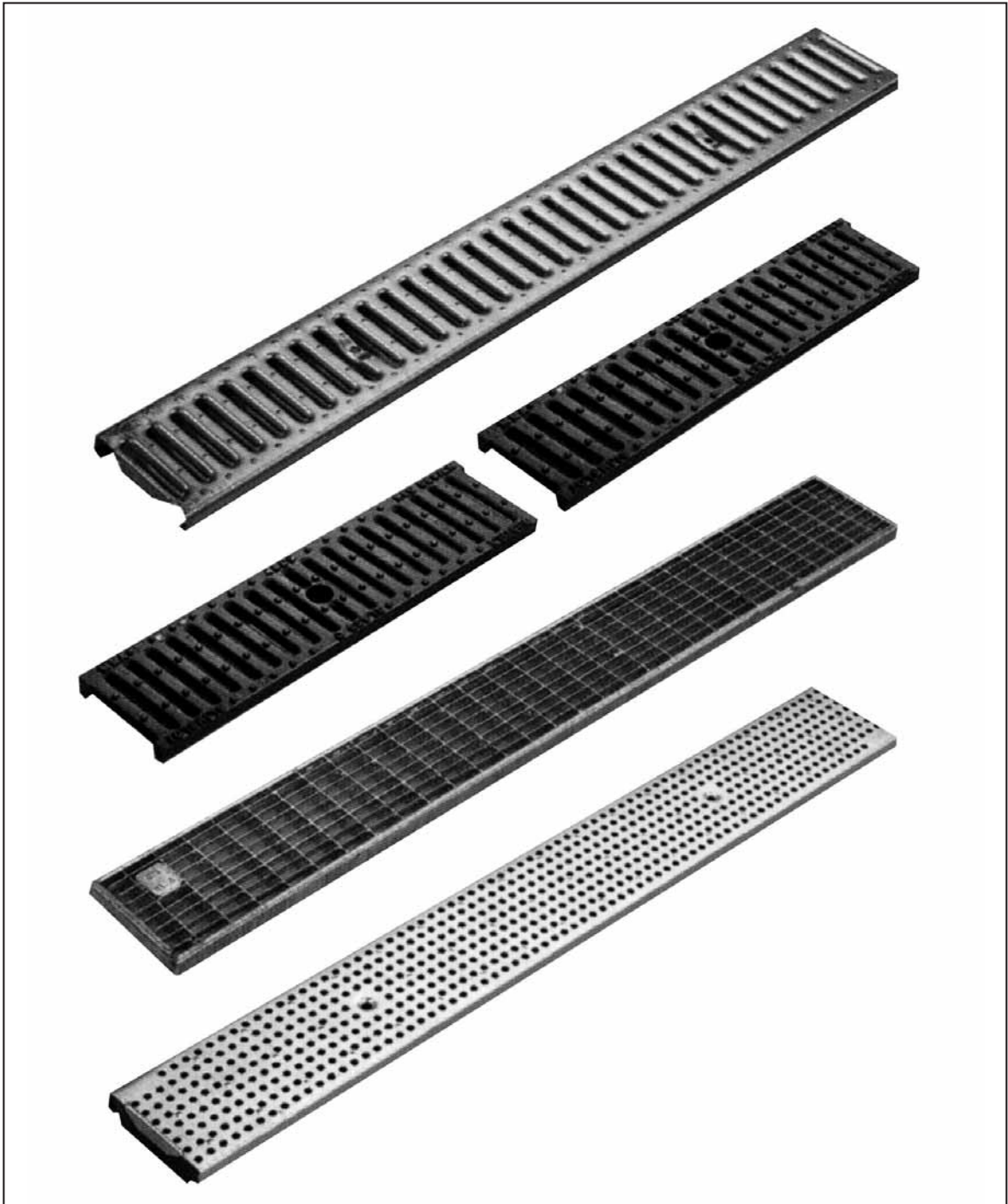
Please see page 53 for remaining instructions.




Part #141100



# Additional Grate Options



Additional Gratings

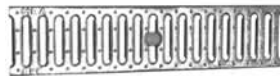
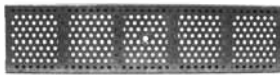
 **WARNING:** Cancer and Reproductive Harm - [www.p65warnings.ca.gov](http://www.p65warnings.ca.gov)

# MEADRAIN® 1000 Gratings



## MEARIN Gratings

### Load Class: A



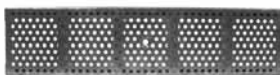
product description	dimension [inches]	product #	lbs/ unit
Viny Lester Fiberglass Bar Grate Uses 152311 Lock	39.4 x 4.8	152005	6.0
Viny Lester Fiberglass Bar Grate Uses 152311 Lock	19.7 x 4.8	152007	3.0
Slotted plastic gray grating	19.7 x 4.8	141709	1.4
Slotted plastic beige grating	19.7 x 4.8	141712	1.4
Galvanized steel perforated grating	39.4 x 4.8	152105	5.5
Galvanized steel perforated grating	19.7 x 4.8	152107	2.8
Stainless steel perforated grating	39.4 x 4.8	152205	5.5
Stainless steel perforated grating	19.7 x 4.8	152207	2.8
Slotted galvanized steel grating	39.4 x 4.8	152101	5.1
Slotted galvanized steel grating	19.7 x 4.8	152106	2.6
Slotted stainless steel grating	39.4 x 4.8	152201	5.1
Slotted stainless steel grating	19.7 x 4.8	152206	2.6
Galvanized steel mesh grating 1.25/0.375 mesh	39.4 x 4.8	152801	4.9
Galvanized steel mesh grating 1.25/0.375 mesh	19.7 x 4.8	152806	2.6
Stainless steel mesh grating 1.25/0.375 mesh	39.4 x 4.8	152901	4.9
Stainless steel mesh grating 1.25/0.375 mesh	19.7 x 4.8	152906	2.6

### Load Class: B



product description	dimension [inches]	product #	lbs/ unit
Galvanized steel mesh grating 1.25/0.375 mesh	39.4 x 4.8	152301	6.6
Stainless steel mesh grating 1.25/0.375 mesh	19.7 x 4.8	152306	3.3
Galvanized steel locking mechanism		152311	0.4

### Load Class: C



product description	dimension [inches]	product #	lbs/ unit
Slotted ductile iron grating 0.5 slots	19.7 x 4.8	152411	11.5
Slotted ductile iron grating 0.25 slots	19.7 x 4.8	152541	11.7
Longitudinal ductile iron grating	19.7 x 4.8	152408	11.8
Galvanized steel mesh grating 1.25/0.6 mesh	19.7 x 4.8 39.4 x 4.8	152508 152503	5.7 10.8
Stainless steel mesh grating 1.25/0.375 mesh	19.7 x 4.8 39.4 x 4.8	152518 152513	5.1 9.9
Reinforced galvanized steel slotted grating	19.7 x 4.8 39.4 x 4.8	152731 152711	6.0 11.9
Reinforced galvanized steel perforated grating	19.7 x 4.8 39.4 x 4.8	152775 152771	5.0 10.0
Reinforced stainless steel perforated grating	19.7 x 4.8 39.4 x 4.8	152785 152781	5.0 10.0
Reinforced stainless steel slotted grating	19.7 x 4.8 39.4 x 4.8	152757 152755	6.0 11.9
Solid cast iron cover (Uses 152116 lock)	19.7 x 4.8	152003	17.0

### Load Class: E



product description	dimension [inches]	product #	lbs/ unit
Slotted ductile iron grating 0.5 slot	19.7 x 4.8	152611	11.0
Slotted ductile iron grating 0.25 slot	19.7 x 4.8	152761	11.5