

HEAR WHAT OTHERS ARE SAYING ABOUT OUR PRODUCTS:

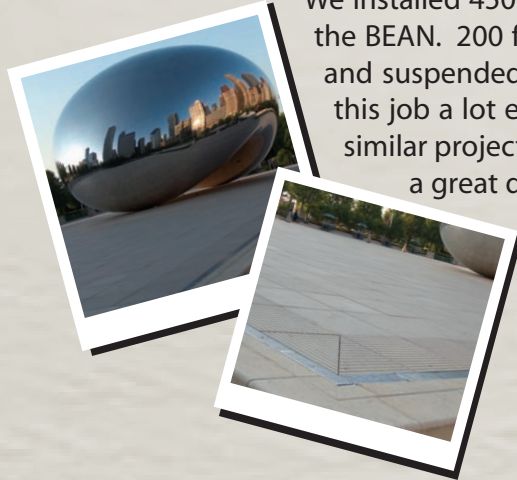
Project - Millennium Park

Product - MEA-JOSAM S1000 with stainless steel perforated grates

Location: Chicago

We installed 450 feet of MEA-JOSAM trench drain around the concert area and the BEAN. 200 feet was installed on the upper level which had to be installed and suspended for two months. Using the MEA-JOSAM chair supports made this job a lot easier. We would highly recommend the use of MEA-JOSAM in similar projects. It was easy to install and completes just about any look with a great drainage solution.

Thomas P Adamson & Associates



www.josam.com

ABOUT MEA-JOSAM

The MEA-Group and Josam Company joined forces to create the **MEA-JOSAM** Drainage Solution.
So began the quest to engineer the best quality trench drain system to fit your application.

CUSTOMER SERVICE CENTERS

JOSAM CORPORATE
525 West Highway 20
Michigan City, IN 46360
800.36.JOSAM
F 800.627.0008

JOSAM EXECUTIVE
2501 S Front Street
Philadelphia, PA 19148
215.339.5370
F 800.962.3312

JOSAM WEST
2333 Grant Ave
San Lorenzo, CA 94580
510.481.6400
F 800.995.6726

TRENCH DRAIN SYSTEMS


TRENCH DRAIN SOLUTIONS TO SUIT MANY APPLICATIONS



- **Pedestrian areas**
- **Parks**
- **Warehouses**
- **Parking structures**
- **Airport runways**



Quality engineered trench drain system

 **WARNING:** Cancer and Reproductive Harm - www.p65warnings.ca.gov

TRENCH DRAIN SYSTEMS



Quick and continuous drainage of surface water makes an essential contribution to safety; especially in high-traffic areas. The Mea-Josam Company offers a comprehensive range of products that can meet your surface drainage requirements whether it be residential construction or the heaviest of industrial applications.

OFFERING CHANNEL PRODUCTS IN VARIOUS MATERIALS

POLYMER CONCRETE

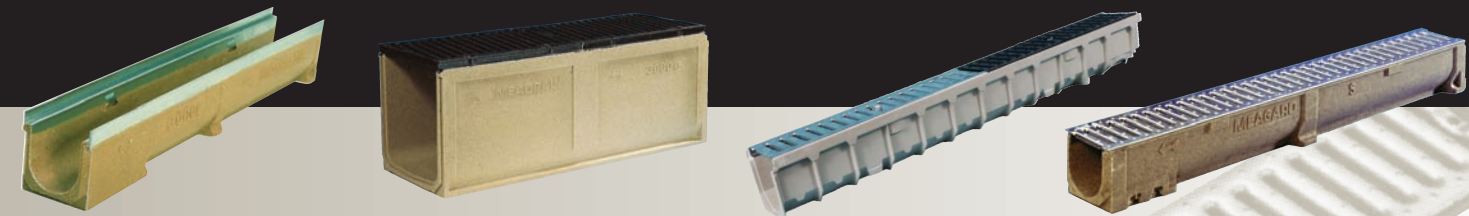
- Molded channel provides engineered and consistent interior surface
- Compression strength 4 times greater than concrete
- Impervious to water; won't freeze
- Expands/contracts with surrounding concrete
- Chemical, UV and age resistant

FIBERGLASS

- Molded channel is lightweight, easy to handle
- Compression strength 6 times greater than concrete
- Reinforced design requires no additional support frame
- Chemical, heat and abrasion resistant

APPLICATIONS

- | | |
|--------------|-----------------|
| • Driveways | • Loading Docks |
| • Garages | • Parking Areas |
| • Plazas | • Kitchens |
| • Courtyards | • Supermarkets |
| • Car Wash | • Stadiums |
| • Warehouses | • Sport Tracks |



MEADRAIN SUPREME

PRE-CAST POLYMER CONCRETE DRAINAGE CHANNELS W/ BUILT-IN SLOPE

- (4) Channel widths; 6, 8, 10 & 14"
- (4) Edge protections; galvanized & stainless steel, ductile iron and polymer concrete
- Catch basin and large gully outlets

MEADRAIN TOP GRATING

RANGE OF UNIVERSAL CHANNEL GRATINGS TO FIT ALL MEADRAIN CHANNELS

- Ductile iron, galvanized and stainless Steel, plastic and fiberglass materials
- Clip-fix and Pro-fix integral locking mechanisms
- Top-slot frame for "grate-less" channel drainage

MEADRAIN SOLUTION

UNIQUE CHANNELS FOR SPECIAL APPLICATIONS

- Shallow channel (3.1" height) accepting MEADRAIN TOP gratings
- Polymer concrete parking channel (2" height) requires no grating
- Polymer concrete curb-channel assembly

MEADRAIN MEARIN

REINFORCED FIBERGLASS CHANNELS ACCEPTING MEADRAIN TOP GRATINGS


- Ductile iron, galvanized and stainless steel, plastic and fiberglass materials

MEADRAIN SELECT

DOMESTIC/LANDSCAPING APPLICATION

- MEAGARD: polymer concrete with galvanized steel & ductile iron grate
- MEAHOME: fiberglass with galvanized steel grate
- MEADRIIVE: high density polyethylene channel and grating

Contact MEAJOSAM for technical support in the design, selection and installation of channel drainage products.

 **WARNING:** Cancer and Reproductive Harm - www.p65warnings.ca.gov