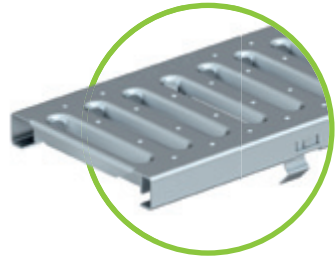
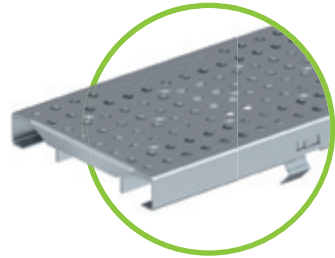


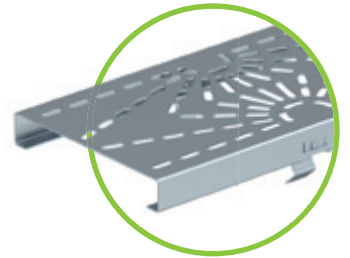
1. Mesh grating MW 30/10  
cl. B or cl. C -  
galvanised steel



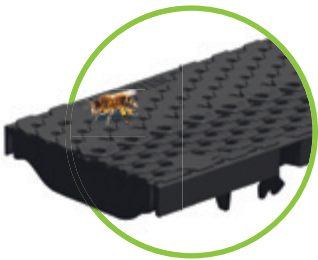
2. Slotted grating SW 8/80  
cl. A or cl. C -  
galvanised steel



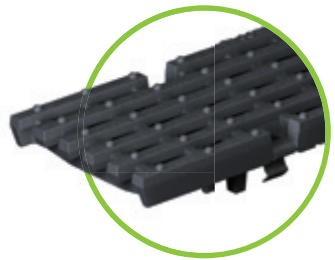
3. Perforated grating hole  
diameter 6,0 mm, cl A or cl. C  
galvanised steel



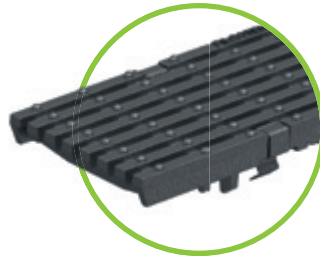
4. Design grating  
different designs  
**on request**



5. COMBee-design grating  
hole diameter 7,3 mm  
cl. C



6. Ductile iron elongated  
bar grating  
MW 29/13, cl. C



6. Ductile iron elongated  
bar grating, MW 29/6,  
narrow SW, Kl. C



7. Slot top, cl. C  
SH 80 or 110 mm,  
SW 12,5 or 18mm,  
galvanised or  
stainless steel V2A

**i** Special slot tops  
on request!

