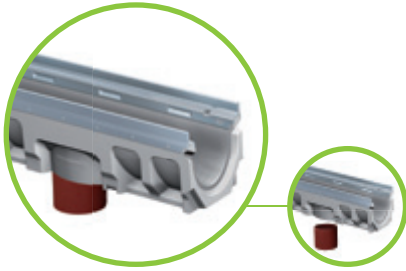
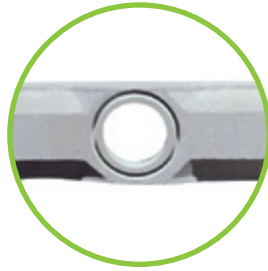




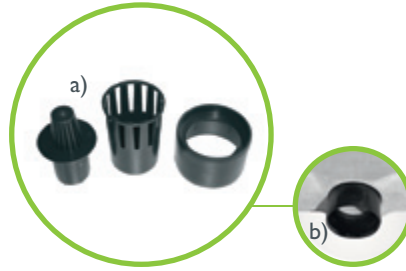
Accessories



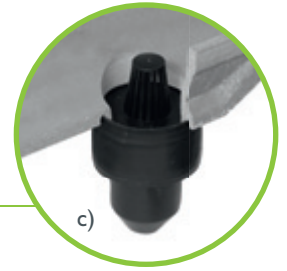
Bottom outlet made of PVC sewer pipes - on site installation



Prefabricated DN 100 outlet opening



a) Odour trap for bottom outlet consisting of 3 pieces
b) Outlet pipe of foul-air trap is inserted into outlet opening from below before installation.



c) The two remaining parts complete the foul-air trap - finished!

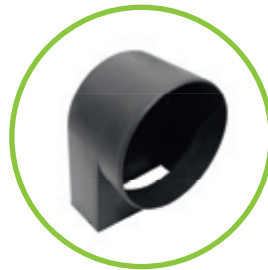
i Positioning of outlet opening: channel end to outlet centre = 250 mm



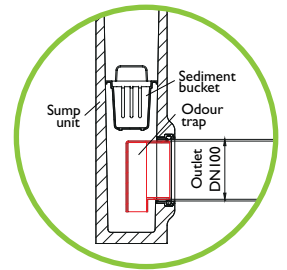
FILCOTEN pro sump unit, L=500 mm, to fit NW



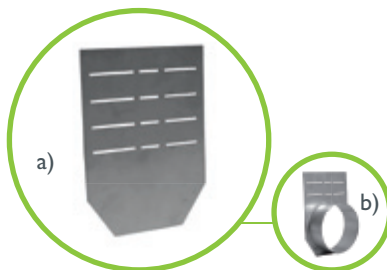
Sediment bucket in plastic for sump unit to fit NW - acts as a dirt trap



Retrofittable odour trap for sump unit DN 100 or 150
Installation: Insert the odour trap from the inside and connect with the sewage pipe.



Odour trap made of PVC bends for sump units - suitable for sump units with outlets DN 150/200



a) Front- /end cap for all NW
b) End cap with outlet for all NW

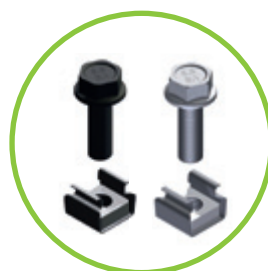


Front- /end cap
FILCOTEN pro mini



Anti-vandalism locking device for all gratings - except slotted gratings. Required per grating: 2 pcs.

i Detailed Description page 24



Bolting kits:
Bolts/nuts galvanised or stainless steel V2A

for ductile iron bar gratings cl. E (only available in cast iron edge) for all NW and for mesh gratings cl. C (FCT pro 300)

i M8 at NW 100-200 / M10 at NW 300