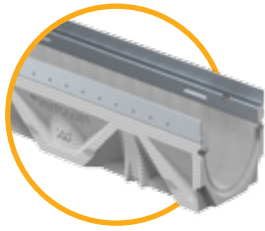
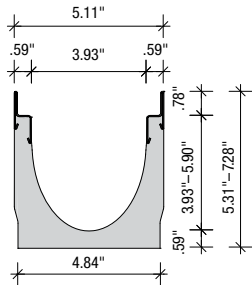


FILCOTEN® Tec 100



FILCOTEN Tec 100

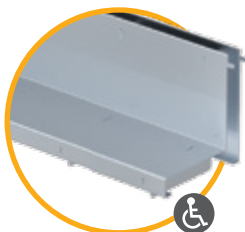
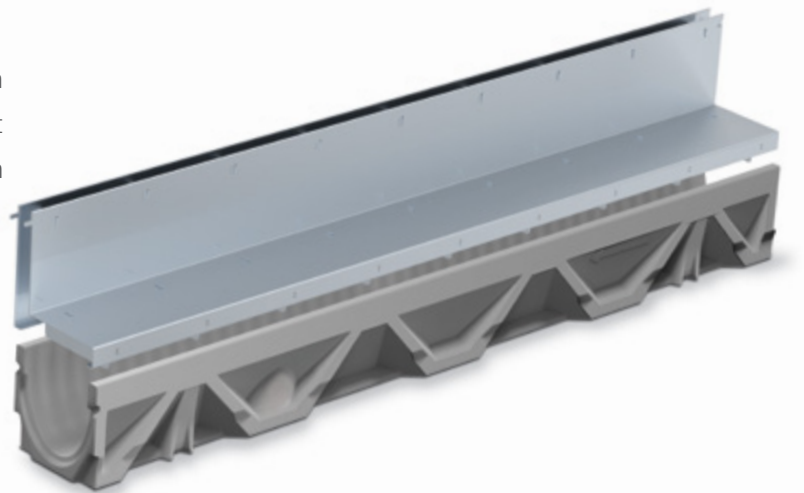


FILCOTEN® Tec V 100 Trench Drain

4"/100mm wide channel body with galvanized rail, pre-sloped and neutral sections

| Item No. | Product Name | Slope | Length (in.) | Height at Channel End (in.) | Weight (lb.) |
|----------|--|-------|--------------|-----------------------------|--------------|
| 10410200 | FILCOTEN Tec V 100 Channel 0 with Galvanized Rail - Neutral | 0% | 39.37 | 5.31 | 28.66 |
| 10410201 | FILCOTEN Tec V 100 Channel 1 with Galvanized Rail | 0.5% | 39.37 | 5.31-5.51 | 29.54 |
| 10410202 | FILCOTEN Tec V 100 Channel 2 with Galvanized Rail | 0.5% | 39.37 | 5.51-5.71 | 31.08 |
| 10410203 | FILCOTEN Tec V 100 Channel 3 with Galvanized Rail | 0.5% | 39.37 | 5.71-5.91 | 32.63 |
| 10410204 | FILCOTEN Tec V 100 Channel 4 with Galvanized Rail | 0.5% | 39.37 | 5.91-6.10 | 33.95 |
| 10410205 | FILCOTEN Tec V 100 Channel 5 with Galvanized Rail | 0.5% | 39.37 | 6.10-6.30 | 35.05 |
| 10410261 | FILCOTEN Tec V 100 Channel 5-0 with Galvanized Rail - Neutral | 0% | 39.37 | 6.30 | 35.49 |
| 10410206 | FILCOTEN Tec V 100 Channel 6 with Galvanized Rail | 0.5% | 39.37 | 6.30-6.50 | 36.16 |
| 10410207 | FILCOTEN Tec V 100 Channel 7 with Galvanized Rail | 0.5% | 39.37 | 6.50-6.69 | 37.04 |
| 10410208 | FILCOTEN Tec V 100 Channel 8 with Galvanized Rail | 0.5% | 39.37 | 6.69-6.89 | 38.36 |
| 10410209 | FILCOTEN Tec V 100 Channel 9 with Galvanized Rail | 0.5% | 39.37 | 6.89-7.09 | 39.68 |
| 10410210 | FILCOTEN Tec V 100 Channel 10 with Galvanized Rail | 0.5% | 39.37 | 7.09-7.28 | 40.79 |
| 10410262 | FILCOTEN Tec V 100 Channel 10-0 with Galvanized Rail - Neutral | 0% | 39.37 | 7.28 | 41.23 |

FILCOTEN® by NDS® slot top. When the design is as important as the function, FILCOTEN® slot top grates are the first choice. With a slot width of 0.5", it blends in with any design aesthetic. The high load rating, and sleek maintenance unit make this grate option versatile enough to be used in many applications.



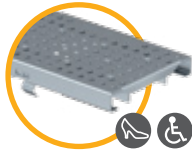
17110243

FILCOTEN® Tec V 100 Slot Top Grates

| Item No. | Product Name | Dimensions L x W x H (in.) | Load class per EN1433 | Max Design Load (lb.) | Slot/mesh width | Weight (lb.) | Intake Area (sq. in./ft.) | Intake Area (cm ² /m) |
|----------|---|----------------------------|-----------------------|-----------------------|-----------------|--------------|---------------------------|----------------------------------|
| 17110243 | FILCOTEN 100 Galvanized Steel Asymmetrical Slot Top Grate Class C - 1m | 39.37/4.84/5.24 | Class C | 56,200 | 0.5" (12.5mm) | 11.90 | 5.91 | 125 |
| 17110244 | FILCOTEN 100 Galvanized Steel Asymmetrical Slot Top Grate Class C - 1/2m | 19.69/4.84/5.24 | Class C | 56,200 | 0.5" (12.5mm) | 5.95 | 5.91 | 125 |
| 17110281 | FILCOTEN 100 Galvanized Steel Maintenance Unit for Slot Top Grate Class C | 19.69/4.84/5.20 | Class C | 56,200 | 0.5" (12.5mm) | 11.02 | 5.91 | 125 |

FILCOTEN® Tec 100

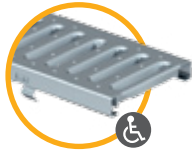
FILCOTEN® Tec V 100 Grates with fix-connection self-locking system



17010204, 17010205,
17010228, 17010229



17010220 & 17010221



17010202, 17020203,
17010206, 17010207



17010402



17010106 (heelproof),
17010110 (not heelproof)



17010105

| Item No. | Product Name | Dimensions L / W / H (in.) / (mm) | Load class per EN1433 | Max. Design Load (lb.) | Slot/mesh width | Weight (lb.) | Weight (kg.) | Intake Area (in. ² /ft.) | Intake Area (cm ² /m) | Flow Rate Through Grate* (GPM) |
|----------|---|---|-----------------------------|------------------------------|-------------------------------|-----------------|-----------------|---|-------------------------------------|--------------------------------------|
| 17010202 | FILCOTEN 100 Galvanized Steel Slotted Grate Class A - 1m | 39.37"/4.80"/0.78" 1000/122/20 | Class A | 3,374 | 0.31" x 3.15" (8 x 80mm) | 3.31 | 1.5 | 12.04 | 225 | 106.837 |
| 17010203 | FILCOTEN 100 Galvanized Steel Slotted Grate Class A - 1/2 m | 19.69"/4.80"/0.78" 500/122/20 | Class A | 3,374 | 0.31" x 3.15" (8 x 80mm) | 1.76 | 0.8 | 12.04 | 255 | 106.837 |
| 17010204 | FILCOTEN 100 Galvanized Steel Perforated Grate Class A - 1m | 39.37"/4.80"/0.78" 1000/122/20 | Class A | 3,374 | 0.24" hole (6.5mm) | 4.19 | 1.9 | 8.03 | 170 | 80.7217 |
| 17010205 | FILCOTEN 100 Galvanized Steel Perforated Grate Class A - 1/2 m | 19.69"/4.80"/0.78" 500/122/20 | Class A | 3,374 | 0.24" hole (6.5mm) | 2.2 | 1.0 | 8.03 | 170 | 80.7217 |
| 17010220 | FILCOTEN 100 Galvanized Steel Mesh Grate Class B - 1m | 39.37"/4.80"/0.78" 1000/122/20 | Class B | 28,100 | 1.18" x 3.15" (30 x 80mm) | 6.17 | 2.8 | 46.29 | 980 | 450.987 |
| 17010221 | FILCOTEN 100 Galvanized Steel Mesh Grate Class B - 1/2 m | 19.69"/4.80"/0.78" 500/122/20 | Class B | 28,100 | 1.18" x 3.15" (30 x 80mm) | 3.09 | 1.4 | 44.88 | 950 | 450.987 |
| 17010206 | FILCOTEN 100 Galvanized Steel Slotted Grate Class C - 1m | 39.37"/4.80"/0.78" 1000/122/20 | Class C | 56,200 | 0.31" x 3.15" (8 x 80mm) | 9.92 | 4.5 | 12.99 | 275 | 130.579 |
| 17010207 | FILCOTEN 100 Galvanized Steel Slotted Grate Class C - 1/2 m | 19.69"/4.80"/0.78" 500/122/20 | Class C | 56,200 | 0.31" x 3.15" (8 x 80mm) | 4.85 | 2.2 | 12.99 | 275 | 130.579 |
| 17010228 | FILCOTEN 100 Galvanized Steel Perforated Grate Class C - 1m | 39.37"/4.80"/0.78" 1000/122/20 | Class C | 56,200 | 0.24" hole (6.5mm) | 7.28 | 3.3 | 8.03 | 170 | 80.7217 |
| 17010229 | FILCOTEN 100 Galvanized Steel Perforated Grate Class C - 1/2 m | 19.69"/4.80"/0.78" 500/122/20 | Class C | 56,200 | 0.24" hole (6.5mm) | 3.75 | 1.7 | 8.03 | 170 | 80.7217 |
| 17010402 | FILCOTEN 100 Plastic Honeycomb Grate Class C - 1/2 m | 19.69"/4.80"/0.78" 500/122/20 | Class C | 56,200 | 0.31" hole (8.0mm) | 2.43 | 1.1 | 13.70 | 290 | 137.702 |
| 17010106 | FILCOTEN 100 Ductile Iron Longitudinal Bar Grate Class C - 1/2 m | 19.69"/4.80"/0.78" 500/122/20 | Class C | 56,200 | 0.24" x 1.14" (6 x 29mm) | 7.94 | 3.6 | 15.12 | 320 | 151.947 |
| 17010110 | FILCOTEN 100 Ductile Iron Reinforced Longitudinal Bar Grate Class D - 1/2 m | 19.69"/4.80"/0.78" 500/122/20 | Class D | 89,920 | 0.35" x 1.14" 9 x 29mm) | 7.50 | 3.2 | 25.98 | 550 | 225.546 |
| 17010105 | FILCOTEN 100 Ductile Iron Slotted Class E - 1/2 m | 19.69"/4.80"/0.78" 500/122/20 | Class E | 134,800 | 0.55" x 3.94" (14 x 100mm) | 8.37 | 3.8 | 21.54 | 456 | 220.788 |

*Calculated using simple orifice equation with 1/2 inch head

FILCOTEN® Tec V 100 Accessories



FILCOTEN Tec
Sump Unit 100

| Item No. | Product Name | Material | Weight (lb.) |
|----------|--|--|--------------|
| 10410291 | FILCOTEN Tec 100 Sump | High-Performance Fiber-Reinforced Concrete | 52.91 |
| 22515 | FILCOTEN 100 Silt Bucket | Plastic | 0.44 |
| 32087 | FILCOTEN 100 Anti-Vandalism Locking Device | Stainless Steel | 0.22 |
| 19010231 | FILCOTEN 100 End Cap with 4 in. Outlet | Galvanized Steel | 0.66 |
| 19010915 | FILCOTEN 100 Rebar Support | Galvanized Steel | 2.65 |
| 19011204 | FILCOTEN 100 Bottom Outlet | Galvanized Steel | 0.66 |
| 19010230 | FILCOTEN 100 Closed End Cap | Galvanized Steel | 0.66 |

NOTE: Will accept 4" pipe

