

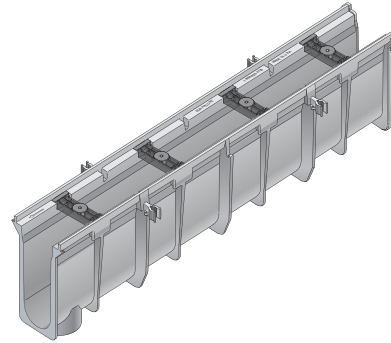


6" wide

HDPE

PRE SLOPED TRENCH DRAINS

6 $\frac{5}{8}$ " wide, 4-foot-long trench drain system with a built-in slope of 0.7%. Each channel section is molded of gray structural foam polyethylene with UV inhibitors and has a 4" inside diameter with a 2" radius bottom. The system consists of 4-foot channel sections including 24 pre-sloped channel sections and 9 neutral channel sections. The sloped channel sections enable the system to extend to a length of 96 feet with a continuous slope.



Part #.	Description	Flow Rate GPM	Min. Inner Depth	Max. Inner Depth	Min. Outer Depth	Max. Outer Depth	Wt. Ea. (lbs.)
600-90N	3.99" Deep Neutral Slope Channel	75	3.998	3.998	5.354	5.760	7.45
91	3.99" to 4.34" Deep Slope Channel	75	3.998	3.998	5.690	5.770	7.52
91N	4.34" Deep Neutral Slope Channel	89	4.334	4.334	5.692	6.103	7.81
92	4.34" to 4.67" Deep Slope Channel	89	4.334	4.670	6.062	6.106	7.92
93	4.67" to 5.00" Deep Slope Channel	103	4.670	5.006	6.362	6.442	8.27
094	5.00" to 5.34" Deep Slope Channel	117	5.006	5.342	6.698	6.778	8.64
094N	5.34" Deep Channel	131	5.342	5.342	6.700	7.111	8.93
095	5.34" to 5.68" Deep Slope Channel	131	5.342	5.678	7.034	7.114	8.99
096	5.68" to 6.01" Deep Slope Channel	145	5.678	6.014	7.370	7.450	9.36
097	6.01" to 6.35" Deep Slope Channel	159	6.014	6.350	7.706	7.786	9.74
097N	6.35" Deep Neutral Slope Channel	173	6.350	6.350	7.708	8.119	10.04
098	6.35" to 6.69" Deep Slope Channel	173	6.350	6.686	8.042	8.122	10.11
099	6.69" to 7.02" Deep Slope Channel	187	6.686	7.022	8.378	8.458	10.48
100	7.02" to 7.36" Deep Slope Channel	201	7.022	7.358	8.714	8.794	10.86
100N	7.36" Deep Neutral Slope Channel	215	7.358	7.358	8.716	9.127	11.16
101	7.36" to 7.69" Deep Slope Channel	215	7.358	7.694	9.050	9.130	11.23
102	7.69" to 8.03" Deep Slope Channel	229	7.694	8.030	9.386	9.466	11.60
103	8.03" to 8.37" Deep Slope Channel	243	8.030	8.366	9.722	9.802	11.98
103N	8.37" Deep Neutral Slope Channel	257	8.366	8.366	9.724	10.135	12.27
104	8.37" to 8.70" Deep Slope Channel	257	8.366	8.702	10.058	10.138	12.34
105	8.70" to 9.04" Deep Slope Channel	271	8.702	9.038	10.394	10.474	12.71
106	9.04" to 9.37" Deep Slope Channel	285	9.038	9.374	10.730	10.810	13.07
106N	9.37" Deep Neutral Slope Channel	299	9.374	9.374	10.732	11.143	13.39
107	9.37" to 9.70" Deep Slope Channel	299	9.374	9.710	11.066	11.146	13.4
108	9.70" to 10.05" Deep Slope Channel	313	9.710	10.046	11.402	11.482	13.83
109	10.05" to 10.38" Deep Slope Channel	327	10.046	10.382	11.738	11.818	14.20
109N	10.38" Deep Neutral Slope Channel	341	10.382	10.382	11.740	12.151	14.50
110	10.38" to 10.71" Slope Channel	341	10.382	10.718	12.074	12.154	14.57
111	10.71" to 11.05" Slope Channel	355	10.718	11.054	12.410	12.490	14.95
112	11.05" to 11.39" Slope Channel	368	11.054	11.390	12.746	12.826	15.32
112N	11.39" Deep Neutral Slope Channel	382	11.390	11.390	12.785	13.158	15.6
113	11.39" to 11.72" Deep Slope Channel	382	11.390	11.726	13.082	13.162	15.69
114	11.72" to 12.06" Deep Slope Channel	396	11.726	12.062	13.418	13.498	16.06